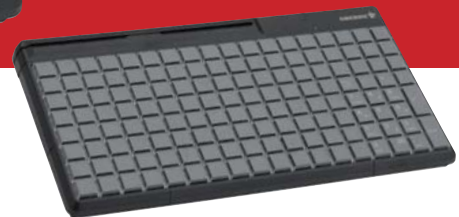


Point of Sale

SPOS Rows & Columns Keyboards



Multifunctional Rows and Columns Keyboards with Optional Magnetic Card Reader and Touchpad for POS and Commercial Applications



Main Applications

- Grocery/Food
- Convenience Goods
- Hospitality
- Car Rentals
- Postal Services
- Retail
- Transport

Key Features

- 144 Key Position Matrix in 14" Form Factor for Universal Key Function Assignment
- Robust Product Design with IP 54 Spill and Dust Resistant Key Field for Harsh Environments
- Plug & Play Configuration for all Common POS Features
- Unique Function Enhancement with 'Cherry Tools' Virtual Programming
- Fully Programmable and Relegendable Keyboard for Easy Layout Configuration and Quick Function Calls
- Option for Unlimited Programmability of all Keys in up to 3 Layers Provides Convenient Data Access
- Moving of Keys Allows for Easy Key Position Exchange Including Modifier Functions
- Grouping of Keys Allows for Easy Assignment of 1x2 and 2x2 Key Positions
- Disabling of Single Key Positions or Complete Rows & Columns with Blank Covers
- Pop-up Window for Comfortable Display of Programmed Keys
- High Performance 3-Track Magnetic Stripe Reader with Freely Programmable Headers and Terminators for Each Track
- Selection of Non-keyboard Hexcodes Enhances Security for Credit Card Processing
- Dual Insertion for Bidirectional Swipe of Magnetic Stripe Card
- Audible and Visual Indication of MSR Good Read
- Flexible Parsing and Configuration of Magnetic Stripe Data Including Start/Stop Sentinels
- Powerful 'Cherry Tools' Configuration Software Allows for Quick Product Set Up and Configuration
- Easy Configuration File Transfer with Windows Explorer
- Comprehensive UPOS Support for Windows and Linux. Support of Client-Server Architectures
- Remote Network Installation with Cherry Tools Activator and Runtime Version
- Touchpad Versions Ensure Easy Cursor Navigation at Minimal Desktop Surface
- Yellow Status LEDs for Improved Visibility in Rooms with Artificial Illumination
- Keyboard Comes with Cable and Key Lenses Included in the Box
- Accessory Kit Includes Multiwide Keycaps and Lenses, Paper Inserts in 5 colors, Blank Covers for Easy Hardware Configuration

Point of Sale

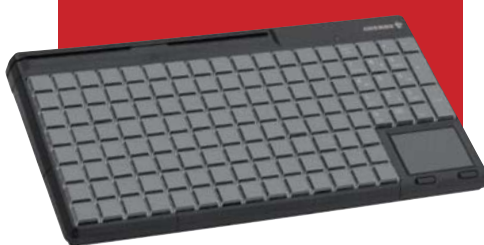
SPOS Rows & Columns Keyboards

Part Number Legend

G86-63410



G86-63411



Main Part Numbers

G86-63410EUADAA

Black 14" USB keyboard with 3-track magnetic stripe reader. US 142 position Rows & Columns key layout. All keys programmable and relegendable. Includes 'Cherry Tools' configuration software and UPOS drivers.

G86-63400EUADAA

Black 14" USB keyboard. US 142 position Rows & Columns key layout. All keys programmable and relegendable. Includes 'Cherry Tools' configuration software and UPOS drivers.

G86-63411EUADAA

Black 14" USB keyboard with 3-track magnetic stripe reader and touchpad. US 130 position Rows & Columns key layout. All keys programmable and relegendable. Includes 'Cherry Tools' configuration software and UPOS drivers.

G86-63401EUADAA

Black 14" USB keyboard with touchpad. US 130 position Rows & Columns key layout. All keys programmable and relegendable. Includes 'Cherry Tools' configuration software and UPOS drivers.

G99-1779ZUB

Black Accessory Kit including 1x2 and 2x2 lenses & keybodies, colored paper inserts and blanks.

Additional product versions on request.



Point of Sale

SPOS Rows & Columns Keyboards

Technical Data

Interface

USB 2.0

Current Input

Typ. 35 mA

Magnetic Strip Reader

Standards:

ISO 7811/-12, AAMVA, JIS
others on request

Durability:

1 million cycles

Reading speed:

3–125 inch/s at 75 Bit/inch
3–50 inch/s at 210 Bit/inch

Data is decoded to keyboard scancodes.

Touchpad

Resolution: 1000 dpi

Two switch-activated mouse buttons

Cable Length

Approx. 1.85 m

Key Layout

142/130 position US key layout (default)

Weight (without/with packaging)

1.4 kg/1.6 kg

Dimension

360 x 198 x 38 mm (keyboard)

415 x 260 x 70 mm (packaging)

Packaging Units

66 keyboards per master carton
2 master cartons per pallet

Keyswitch Lifetime

25 million operations

Storage Temperature

-20°C to 60°C

Operating Temperature

0°C to 50°C

Available Software

Cherry Tools
MS Windows™ 98, ME, 2000, XP

Cherry Tools Runtime,
MS Windows™ 98, ME, 2000, XP,
XPembedded

OPOS Local Edition
MS Windows™ 2000, XP, XPembedded

OPOS Client/Server Edition
MS Windows™ 2000, XP, XPembedded

JPOS Local Edition
MS Windows™ 2000, XP, XPembedded
Suse Linux V8.1-9.0 / Kernel 2.4
Suse Linux V9.1 / Kernel 2.6

JPOS Client/Server Edition
MS Windows™ 2000, XP, XPembedded
Suse Linux V8.1-9.0 / Kernel 2.4
Suse Linux V9.1 / Kernel 2.6

Approvals

cURus, FCC, CE, BSMI, VCCI,
C-Tick, GOST-R

Delivery Volume

Keyboard with Cable, Quick Guide,
CDROM, Key lenses, Key/Lense
Removal Device

Warranty

2 years

For information on repairs or
warranty status contact:
Cherry Technical Support
Phone: 800.510.1689
E-Mail: keyboardsupport@cherrycorp.com

Contact

Call, fax or visit our
website for more information.

Australian Importer/Distributor:
Goodson Imports Pty Ltd
9 Liberty Road, Huntingwood NSW 2148
Representation in all main States and New Zealand
Ph. 02-8875 4544 Fax: 02-8875 4588
www.goodson.com.au

Last Update: 03/13/08

Cherry Electrical Products

11200 88th Avenue
Pleasant Prairie, WI 53158

Phone: 262.942.6500
Web: www.cherrycorp.com

E-Mail: sales@cherrycorp.com
Fax: 262.942.6566

The manufacturer accepts no
liability for errors or non-availability,
and reserves the right to change
specifications without prior notice.

Technical data relates to product
specifications only. Features may
differ from those described.
Only drawings combined with
product specifications shall be
deemed binding.