

Monitor(QCD-P15 Series)

Quick Installation Guide



Safety Precautions

 Please read carefully for safe use prior to making use of the system.

- 1** Do not block system ventilation holes. Install where there will be free air flow around the terminal.
- 2** Connect the power cord to a grounded 3-prong outlet. Be aware that power quality issues, including voltage fluctuations, electrical noise, spikes, outages, interruptions, and other power viruses can disrupt or damage modern electronic equipment. Your dealer may recommend dedicated branch circuits and/or power conditioning, and/or isolated grounding for system networks.
- 3** Power cable should be connected properly together with the consent & adapter.
- 4** In case of using multi-consent or extension cable, do not exceed the mentioned voltage /current capacity.
- 5** In case of thunder occurs, unplug the power cable.
- 6** Do not disassemble the terminal; there are no user serviceable components. In case repair is needed, refer to qualified service personnel.
- 7** Power-off the system first and then disconnect all cables, if the system needs to be dismantled.

Check Contents

Thank you for purchasing SAM4S Dual Monitor. Please check the contents in the box for a start.



Dual Monitor



Screw(Ⓐ) for Monitor 2 pcs



Screw(Ⓑ) for Hand 2 pcs



Installation Guide



Adaptor



Power Cable

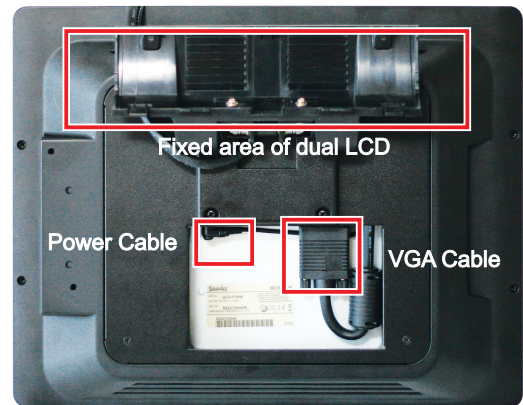
Each Section & Name

Front



Power Light

Back



Fixed area of dual LCD

Power Cable

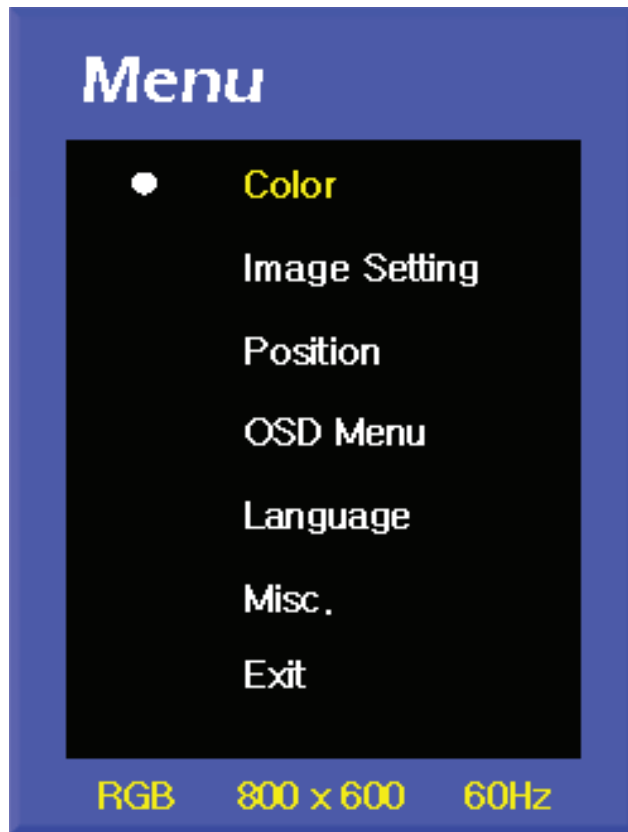
VGA Cable

Button Operation



- MENU** ESC (out of current function) / MENU (function adjustment)
- AUTO** SELECT (menu selection) / AUTO ADJUST (automatic screen adjustment)
- +** UP button
- DOWN button
- ⏻** POWER ON / OFF

Screen Adjustment of Dual Monitor



Color: Contrast/Brightness/Color Adjust/Color Temp

- Contrast : Contrast level Control
- Brightness: Brightness level Control
- Color Adjust: R,G,B color level Control
- Color Temp: Color temperature Select

Image Setting: Clock, Phase, Gamma, Sharpness

- Clock: Fine tune the number of sampled data
- Phase: Fine tune the position of sampled data
- Gamma: Gamma value Select
- Sharpness: Scaling performance Select

Position: H, V position Control

- H/V position: Image H, V position Control

OSD Menu: OSD H, V position, OSD Off timer Control

- OSD H/V position: OSD H,V position Control
- OSD Off timer: OSD Off timer Control

Language: OSD language Select

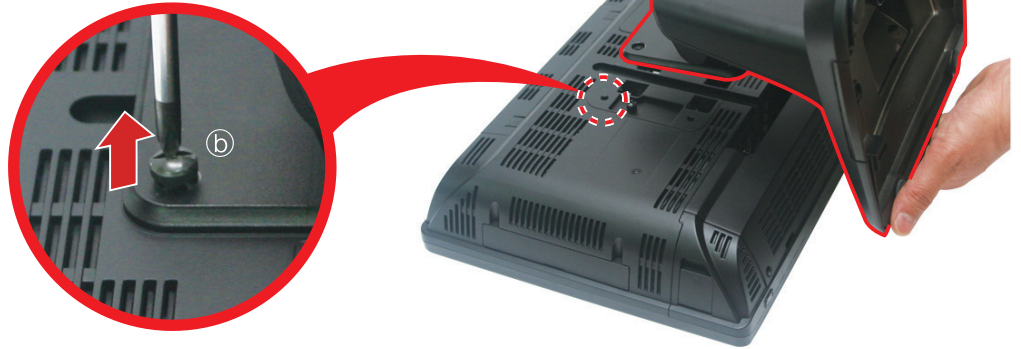
Misc: Input Source/Reset

- Input Source : Input signal select (Analog, DVI)
- Reset: Restore to default Value

Exit / Back:

Disassemble Stand

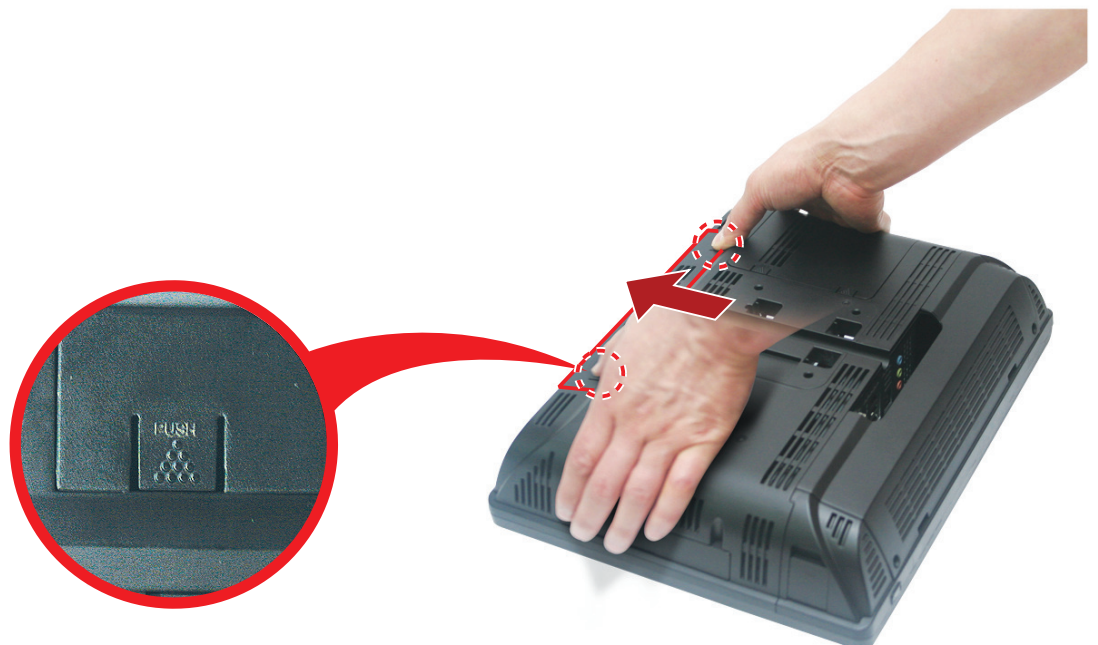
- 1 Unscrew the hand screw (b) and remove the Stand in the arrow direction.



- 2 Press on "PUSH" area and remove the Cover in the arrow direction.

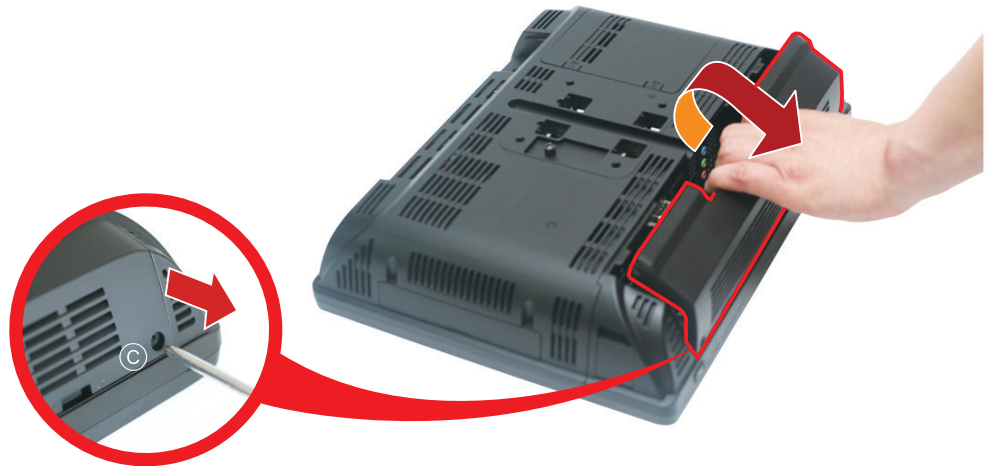


- 3 Remove the Cover by pulling up in the arrow direction.



Install Dual Monitor

- 1 Unscrew the two screws(©) and remove the Cover by pulling up as picture shown.

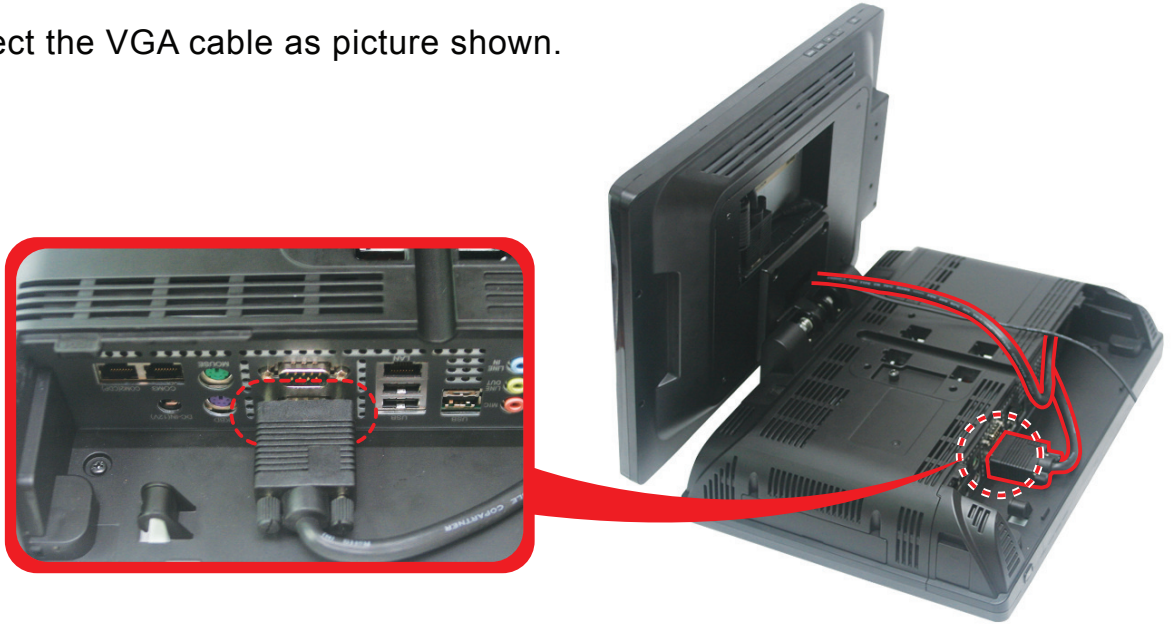


- 2 Assemble the Monitor in the arrow direction and tight it with the two screws(Ⓐ).

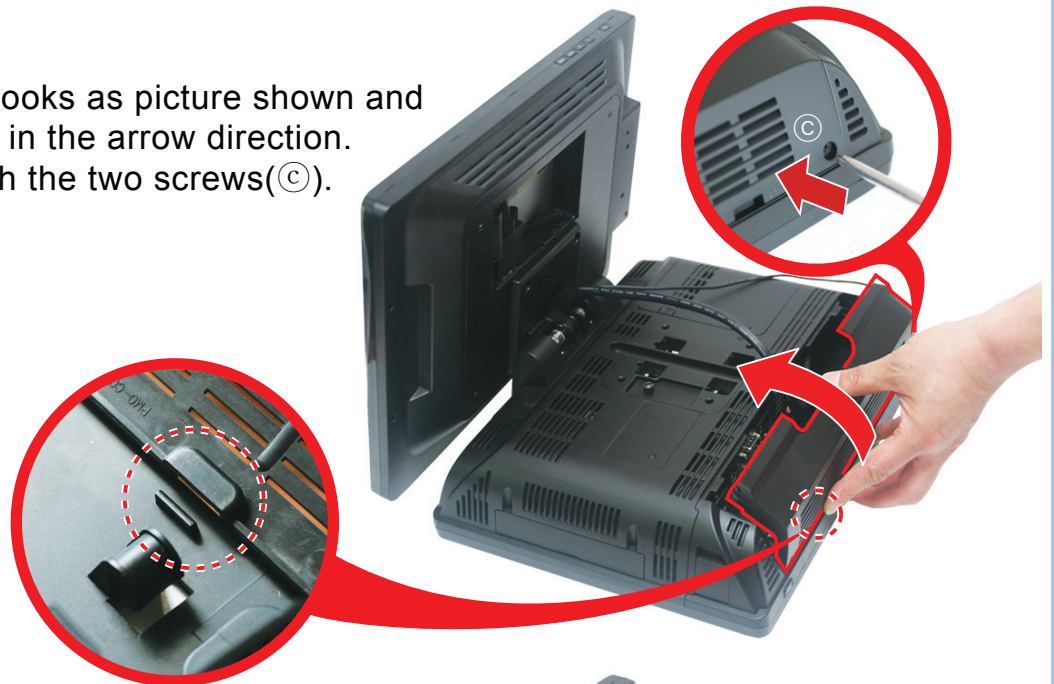


Assemble Stand

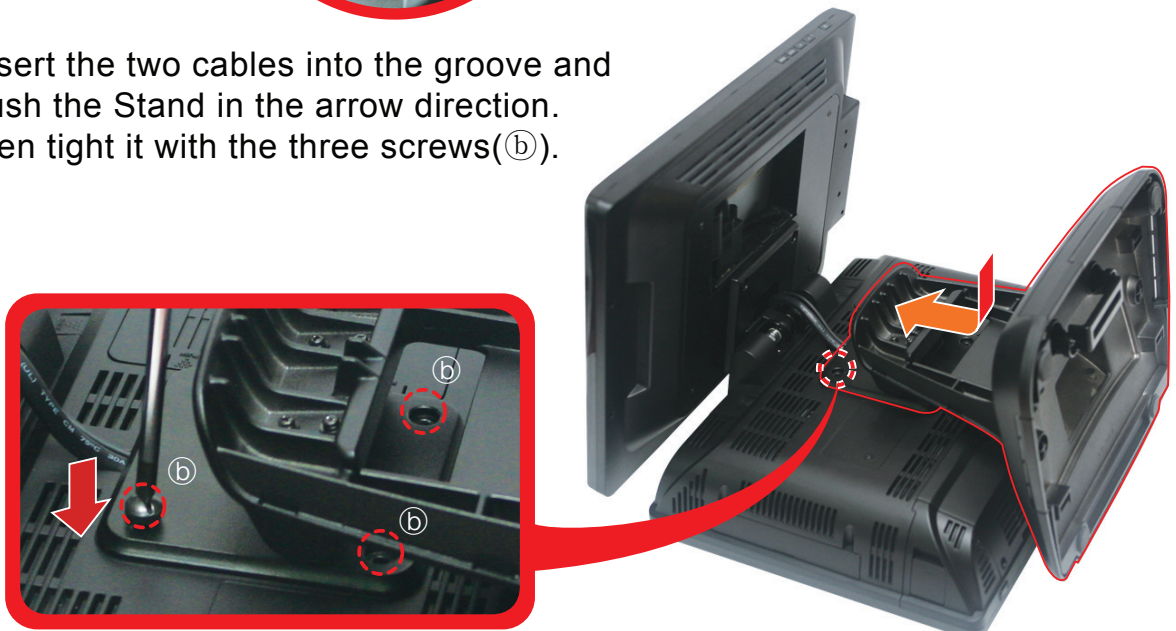
- 1 Connect the VGA cable as picture shown.



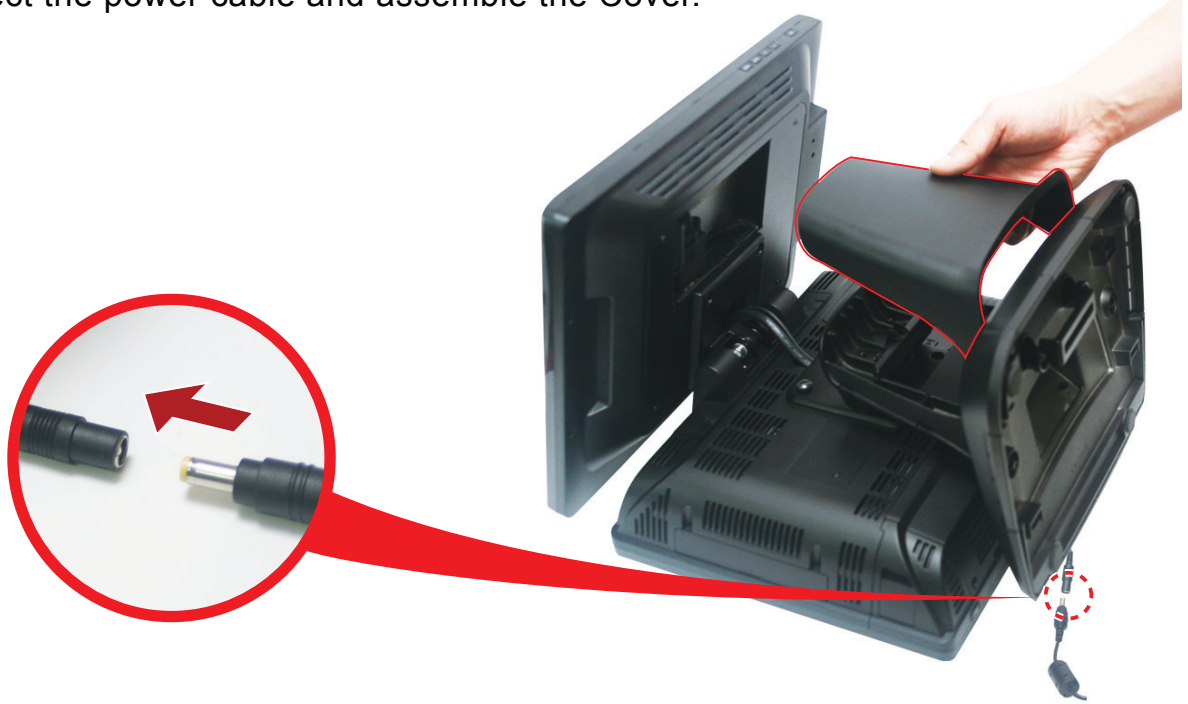
- 2 Place the two hooks as picture shown and push the Cover in the arrow direction. Then tight it with the two screws (©).



- 3 Insert the two cables into the groove and push the Stand in the arrow direction. Then tight it with the three screws (b).



4 Connect the power cable and assemble the Cover.

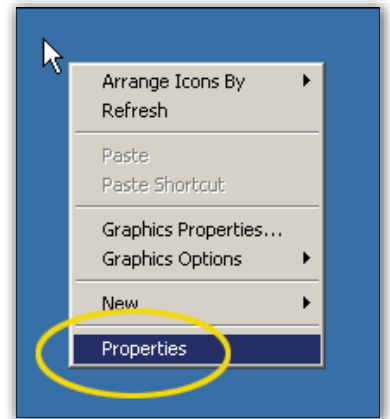


**Installation
complete**

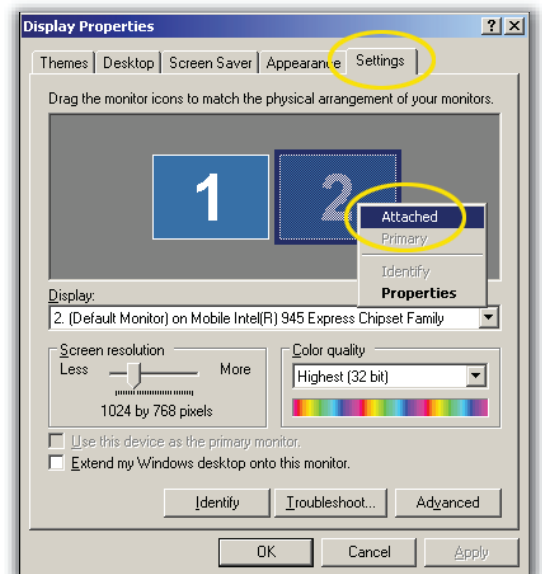


Set up Dual Monitor on Windows


- 1 Right-click of a mouse on the Windows desktop and select “Properties” on the popup menu.

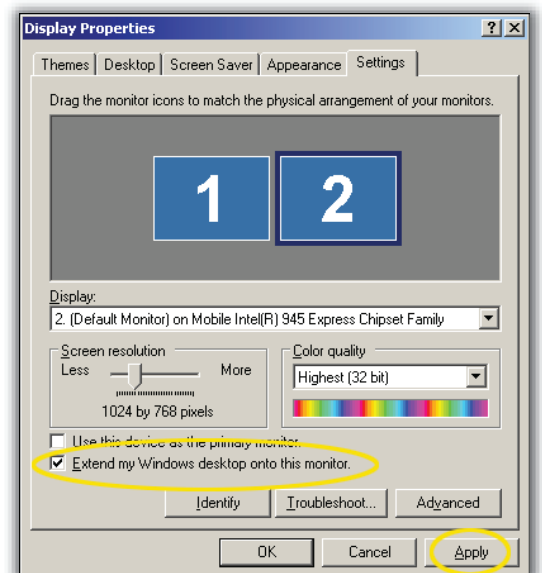


- 2 Select “Settings” tab on the Display Properties dialog. Then select the monitor’s icon of the 2nd and click the right button of the mouse again. And select “Attached” on popup menu.




- 3 Check “Extend my Windows desktop onto this monitor” box and select “Apply” button. You can see the extended screen as ‘one desktop’ on your two monitors.

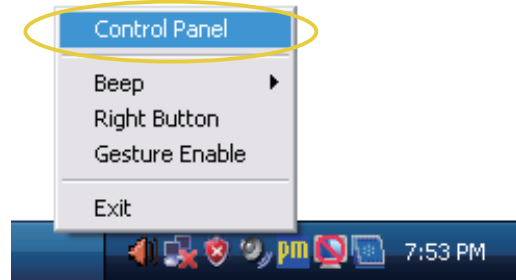
 **If you don't check “Extend my Windows desktop onto this monitor” box, you can see the copied screen as ‘two desktop’ on your two monitors.**



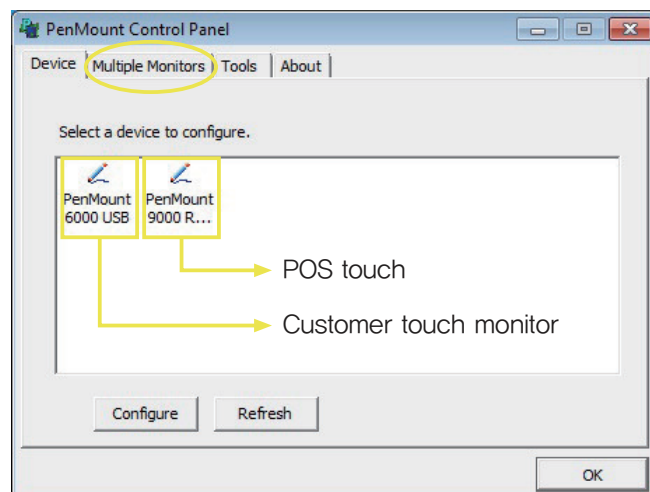
Set up Touch Screen when using Dual Monitor

 If you use dual monitor as an extended screen, touch screen should be set up like below procedure. You need a keyboard for this setting.

- 1 Right-click of a mouse on “PM” icon in the Windows tray icons. And select “Control Panel” on the popup menu.

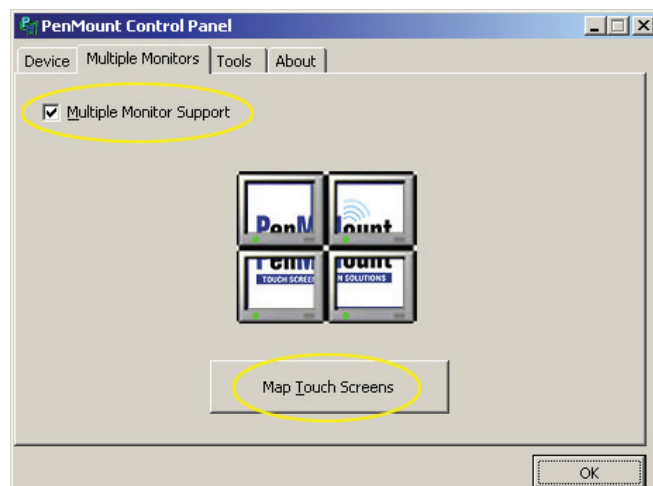


- 2 Select “Multiple Monitors” tab on the “PenMount Control Panel” window.



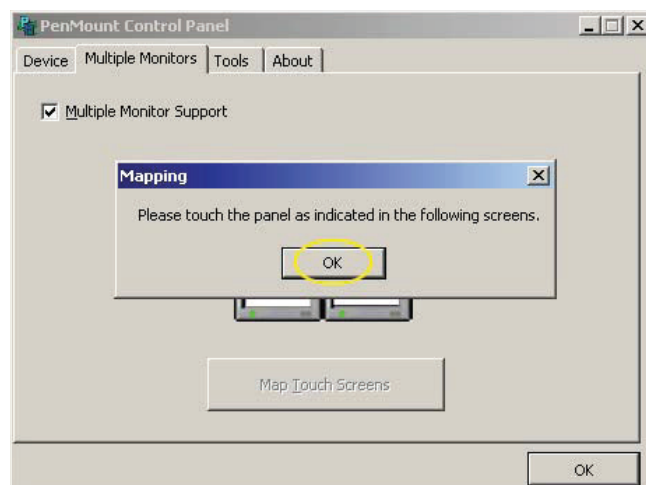
 If a customer monitor doesn't have a feature of touch, a notice of “PenMount 6,000 USB” is not showed up.

- 3 Check “Multiple Monitor Support” box. And click <Map Touch Screens> button.




Set up Touch Screen when using Dual Monitor


- 4 Click <OK> button on “Mapping” message box.



- 5 If you want to use current monitor as a touchable screen, touch the screen. If not press 'S' key to skip, on the connected keyboard.

Please touch this monitor. Press 's' to skip.

 If you want to use a single monitor again, you need to calibrate the touch screen again. Please, calibrate the touch screen with the “Touch Screen” part of e-manual.

 Please contact your dealer/distributor if the problem persists even though the below remedy procedures are carried out.


Q When the power is not turned on.

- A**
- 1** Make sure that the power cable is properly connected. (POS / Dual)
 - 2** Power-saving mode is operated if there is no image on screen and power display lamp blinks.
 - 3** Using Mouse/Keyboard/Power button, the screen can be operated again.

Q There is no image on screen even though power display lamp is on.

- A**
- 1** Make sure that LED color is green.
 - 2** Make sure of VGA cable connected to Dual LCD in case of LED is red.
 - 3** Make sure that Display Properties on Windows is set up to Dual Monitor.

Q Touch Point set-up becomes wrong after dual monitor set-up.

- A** It can be solved through Multiple monitor Support.
-  Please refer to the previous pages.

Q The monitor shows image upside down.

- A**
- 1** Make sure that monitor location is properly fixed in display set-up.
 - 2** If adjustment is required, use Confirm(I) button.

Q Focus is dim.

- A** Change set-up with auto focus button.

Q The color is not clear and the screen shakes.

- A**
- 1** Make sure of VGA cable connection.
 - 2** Change set-up with auto focus button.

System Features

Product Standard

Specification	Model Name : QCD-P15N
LCD Panel	Size : 15" Display Area : 304.128mm(H) x 228.096mm(V) Pixel Pitch : 0.297mm(H) x 0.297mm(V)
Frequency	Horizontal : 30~80KHz Vertical : 56~75KHz
Color	16.2M
Resolution	Optimum : 1024 x 768@60Hz Maximum : 1028 x 1024@75Hz
Input Signal (Termination)	RGB Analog 0.7Vp-p ±5% H/V sync, Composite, SOG TTL Level (V high ≥ 2.0V, V low ≤ 0.8V)
Max. Pixel Clock	89MHz (Analog)
Power Voltage	AC 100-240 V~(+/-10%), 50/60 Hz ± 3 Hz
Computer Connection	15 pin D-SUB Cable
Dimension (WxHxH)	350 x 320 x 50 mm
Environment	Operating Temperature : 10℃ ~ 40℃ (50°F ~ 104°F) Humidity : 10% ~ 80% Storage Temperature : -20℃ ~ 45℃ (-4°F ~ 113°F) Humidity : 5% ~ 95%
Plug & Play	This monitor can be installed in any Plug & Play compatible system. Monitor set-up is optimized by data exchange between monitor and computer system. Users can select different set-up but monitor installation can be done automatically in most cases.
Panel Dot	1 ppm (1/1,000,000) pixel can be brighter or darker on this monitor due to technical limit of production process. This does not give an effect on panel capability.
Sub Pixel	15" (1024x768) : 3,133,440 pixels
Power Supply	60W Adaptor AC Input : 100 ~ 240V, 50 ~ 60Hz, 1A DC Output : 12V, 3.33A

Power Saving

This monitor has power saving feature. If it is not used for a certain period, the screen will turn off and power lamp will change into different color. It shows power saving mode and reduces power consumption. In case of power saving mode, the power is still on a minimum level. If mouse or any keyboard is pressed, the screen will turn back on again. This function is only available when connected to a computer with power saving feature.

Power Saving	Normal Operation	Saving Mode	Off Mode
Power LED Color	On	Blink	Off
Power Consumption	20W	Analog : 1W under	1W Under

 The power consumption will be "0" watt just in case of the power cable is disconnected.