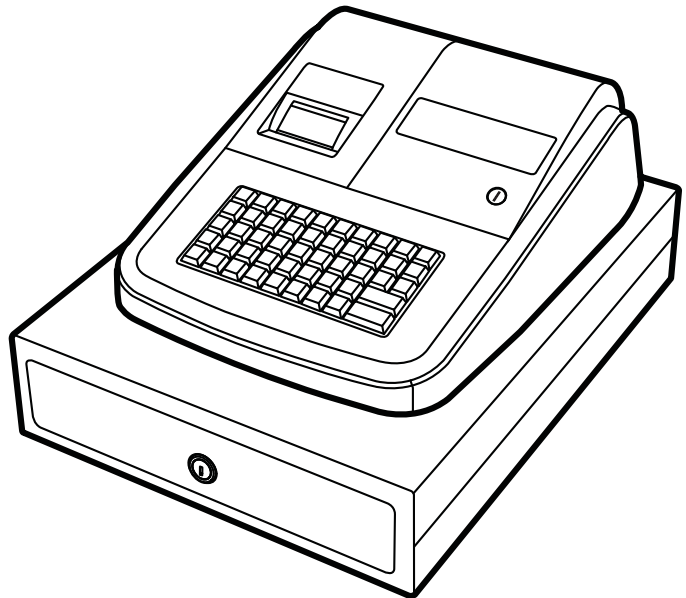


SAM4S

ER-180T Electronic Cash Register AU

Operation and Programming Manual



All specifications are subject to change without notice

JK68-60181A Rev. 1.2 (Feb 12)
From *ER-180T* v1.000 to v1.003

ATTENTION

The product that you have purchased contains a rechargeable Ni-MH battery. This battery is recyclable. At the end of its useful life, under various state and local laws, it may be illegal to dispose of the battery into the municipal waste system.

Check with your local solid waste officials for details concerning recycling options or proper disposal.

WARNING

This is a Class A product. In a domestic environment this product may cause radio interference in which case the user may be required to take adequate measures.



CAUTION

RISK OF EXPLOSION IF BATTERY IS REPLACED BY AN INCORRECT TYPE. DISPOSE OF USED BATTERIES ACCORDING TO THE INSTRUCTIONS.

Precaution Statements

Follow these safety, servicing and ESD precautions to prevent damage and to protect against potential hazards such as electrical shock.

1-1 Safety Precautions

1. Be sure that all built-in protective devices are replaced. Restore any missing protective shields.
2. When reinstalling the chassis and its assemblies, be sure to restore all protective devices, including nonmetallic control knobs and compartment covers.
3. Make sure there are no cabinet openings through which people - particularly children - might insert fingers and contact dangerous voltages. Such openings include excessively wide cabinet ventilation slots and improperly fitted covers and drawers.
4. Design Alteration Warning:
Never alter or add to the mechanical or electrical design of the SECR. Unauthorized alterations might create a safety hazard. Also, any design changes or additions will void the manufacturer's warranty.
5. Components, parts and wiring that appear to have overheated or that are otherwise damaged should be replaced with parts that meet the original specifications. Always determine the cause of damage or over- heating, and correct any potential hazards.
6. Observe the original lead dress, especially near the following areas: sharp edges, and especially the AC and high voltage supplies. Always inspect for pinched, out-of-place, or frayed wiring. Do not change the spacing between components and the printed circuit board. Check the AC power cord for damage. Make sure that leads and components do not touch thermally hot parts.
7. Product Safety Notice:
Some electrical and mechanical parts have special safety-related characteristics that might not be obvious from visual inspection. These safety features and the protection they give might be lost if the replacement component differs from the original - even if the replacement is rated for higher voltage, wattage, etc.
Components that are critical for safety are indicated in the circuit diagram by shading, () or (). Use replacement components that have the same ratings, especially for flame resistance and dielectric strength specifications. A replacement part that does not have the same safety characteristics as the original might create shock, fire or other hazards.

CAUTION

There is the danger of explosion if battery is incorrectly replaced.

Replace only with the same or equivalent type recommended by the manufacturer.

Dispose used batteries according to the manufacturer's instructions.

ATTENTION

Il y a danger d'explosion s'il y a remplacement incorrect de la batterie.

Remplacer uniquement avec une batterie du même type ou d'un type équivalent recommandé par le constructeur.

Mettre au rebut les batteries usagées conformément aux instructions du fabricant.

SAFETY NOTICE: "For pluggable equipment, the socket-outlet shall be installed near the equipment and shall be easily accessible."

1-2 Servicing Precautions

WARNING: First read the-Safety Precautions-section of this manual. If some unforeseen circumstance creates a conflict between the servicing and safety precautions, always follow the safety precautions.

WARNING: An electrolytic capacitor installed with the wrong polarity might explode.

1. Servicing precautions are printed on the cabinet. Follow them.
2. Always unplug the units AC power cord from the AC power source before attempting to:
 - (a) Remove or reinstall any component or assembly
 - (b) Disconnect an electrical plug or connector
 - (c) Connect a test component in parallel with an electrolytic capacitor
3. Some components are raised above the printed circuit board for safety. An insulation tube or tape is sometimes used. The internal wiring is sometimes clamped to prevent contact with thermally hot components. Reinstall all such elements to their original position.
4. After servicing, always check that the screws, components and wiring have been correctly reinstalled. Make sure that the portion around the serviced part has not been damaged.
5. Check the insulation between the blades of the AC plug and accessible conductive parts (examples: metal panels and input terminals).
6. Insulation Checking Procedure: Disconnect the power cord from the AC source and turn the power switch ON. Connect an insulation resistance meter (500V) to the blades of AC plug.

The insulation resistance between each blade of the AC plug and accessible conductive parts (see above) should be greater than 1 megohm.
7. Never defeat any of the B+ voltage interlocks Do not apply AC power to the unit (or any of its assemblies) unless all solid-state heat sinks are correctly installed.
8. Always connect an instrument's ground lead to the instrument chassis ground before connecting the positive lead; always remove the instrument's ground lead last.

1-3 Precautions for Electrostatic Sensitive Devices (ESDs)

1. Some semiconductor (solid state) devices are easily damaged by static electricity. Such components are called Electrostatic Sensitive Devices (ESDs); examples include integrated circuits and some field-effect transistors. The following techniques will reduce the occurrence of component damage caused by static electricity.
2. Immediately before handling any semiconductor components or assemblies, drain the electrostatic charge from your body by touching a known earth ground. Alternatively, wear a discharging wrist-strap device. (Be sure to remove it prior to applying power - this is an electric shock precaution.)
3. After removing an ESD-equipped assembly, place it on a conductive surface such as aluminum foil to prevent accumulation of electrostatic charge.
4. Do not use Freon-propelled chemicals. These can generate electrical charges that damage ESDs.
5. Use only a grounded-tip soldering iron when soldering or unsoldering ESDs.
6. Use only an anti-static solder removal device. Many solder removal devices are not rated as anti-static; these can accumulate sufficient electrical charge to damage ESDs.
7. Do not remove a replacement ESD from its protective package until you are ready to install it. Most replacement ESDs are packaged with leads that are electrically shorted together by conductive foam, aluminum foil or other conductive materials.
8. Immediately before removing the protective material from the leads of a replacement ESD, touch the protective material to the chassis or circuit assembly into which the device will be installed.
9. Minimize body motions when handling unpackaged replacement ESDs. Motions such as brushing clothes together, or lifting a foot from a carpeted floor can generate enough static electricity to damage an ESD.

Contents

Getting Started	1
About the <i>ER-180T</i>	1
Unpacking.....	2
Installing the Paper	2
Basic Features and Functions	5
Standard Hardware	5
Optional Hardware	5
Software Features	5
Display	6
Error Messages List.....	8
Control Lock	9
Control Keys	9
Keyboards.....	10
Memory Clear.....	11
RAM All Clear	11
Initial Clear.....	12
Operating Instructions	13
Function Key Descriptions	13
Clerk Sign-On/Sign-Off	15
Sign-On	15
Sign-Off.....	15
Receipt On and Off.....	15
Calculator Function	16
Item(s) Registrations.....	17
Department Registrations	17
PLU (Price Look Up) Registrations	17
Department Entry - Open Price / Preset Price Override	18
Department Entry - Preset Price	18
Department Entry - Repeat.....	19
Department Entry - Multiplication	19
Department Entry - Multiplication with Decimal Point	20
Department Entry - Single Item	20
Department Entry - Split Pricing	21
PLU Entry - Open Price / Preset Price Override	22
PLU Entry - Preset Price	22
PLU Entry - Multiplication	23
Shifting Tax - (Add On Tax Only)	24
Percent Key (+% and -%) Operations	25
Preset Percent on a Department or PLU Item.....	25
Enter a Percent on a Department or PLU	25
Percent On Sale Total.....	26
- (Minus) Key Registrations	26

Return Merchandise Registrations	27
Voids and Corrections	28
Void Last Item	28
Void Previous Item	28
Cancel	29
Void Position Operations	29
No Sale Operations	30
Open Drawer	30
Non Add Number	30
Received On Account Operations	31
Paid Out Operations	32
Subtotaling a Sale	33
Totaling and Tendering	34
Totaling a Cash Sale	34
Totaling a Check Sale	34
Tendering a Cash Sale	35
Tendering a Check Sale	35
Totaling a Charge Sale	36
Tendering a Charge Sale	36
Split Tender	37
Post Tender	37
Currency Conversion	38

X/Z Mode 39

Introduction	39
X & Z Reports	40
Running a Report - General Instructions	40
Report Table	40
Cash Declaration	41
Program 90 - Cash Declaration Programming	41
Report Samples	42
Financial Report	42
PLU Report	43
Clerk Report	44
Balancing Formulas	45
Net Sales Total	45
Gross Total	45
Grand Total	45

Service Mode Programming 47

Overview	47
Clear All Sales Totals	48
Program 20 - Clear All Sales Totals	48
Clear Grand Total	48
Program 30 - Clear Grand Total	48
EPROM Information	48
Program 50 - EPROM Information	48

Program Mode Programming 49

Default Programming	49
Descriptor Programming Methods	50
Program Overlay Method	50
Descriptor Code Method	51

Overlay Descriptor Programming Methods.....	52
Tax Programming	54
Program 53 - Straight Percentage Tax Rate Programming	54
Department Programming.....	55
Program 500 - Department Status Programming	56
Program 520 - Department Price/HALO Programming.....	57
Program 530 - Department Descriptor Programming (<i>Code Method</i>)	58
PLU Programming.....	59
Program 100 - PLU Status Programming.....	60
Program 200 - PLU Price/HALO Programming	61
Program 300 - PLU Descriptor Programming (<i>Code Method</i>)	62
Program 350 - PLU Link Programming	63
System Option Programming.....	64
Program 30 - System Option Programming	64
System Option Table	65
Print Option Programming	67
Program 40 - Print Option Programming	67
Print Option Table	68
Function Key Programming	70
Program 70 - Function Key Options	71
Program 80 - Function Key Descriptor (<i>Code Method</i>)	72
Program 90 - Function Key HALO and Rates	73
CASH/CHECK/CHARGE	74
CANCEL	75
CURRENCY CONVERSION	76
- / -% / +%	77
Miscellaneous Programming	78
Program 810 - Clerk Description Programming.....	78
Program 700 - Preamble Logo Description Programming (<i>Code Method</i>).....	79
Program 750 - Postamble Logo Description Programming (<i>Code Method</i>)	80
Program 1300 - Date and Time Programming	81
Program 1600 - Machine Number Programming	82
Program Scans	83
Program 15 - Machine Number Programming	83

Getting Started

About the *ER-180T*

The *ER-180T / ER-180TDL* offers in two different versions.

- *ER-180T / ER-180TDL* feature a raised 48-position key with key cap keyboard includes 16 Department Keys.
- Along with 16 Departments, a fixed 500 PLUs allows for easy item management.
- *ER-180T / ER-180TDL* is an excellent low cost solution for a wide range of retail environments.
- *ER-180T / ER-180TDL*, with its superb thermal printing system, always provide the fastest in transaction speeds.
- *ER-180T / ER-180TDL is preset with 10% GST and Australian rounding as well as a number of useful functions.*

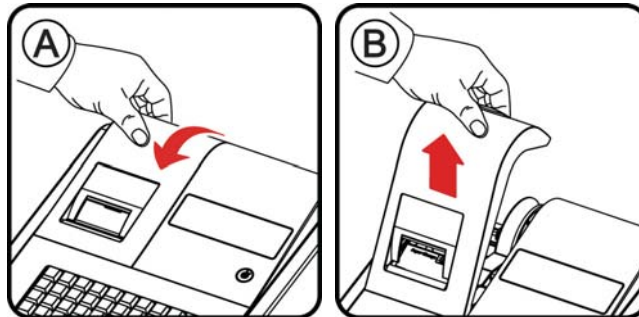
Unpacking

1. Unpack and unwrap the cash register.
2. Locate in the packing the following items:
 - 1 DC power supply
 - 1 roll of paper
 - 1 set of keys
 - **ER-180T:** 5 pcs., REG, VD, Z, P and C one of each
 - **ER-180TDL:** 6 pcs., REG, VD, Z, P, C and **Drawer** one of each
 - This Operation and Programming Manual
3. For **ER-180TDL**, remove the cardboard protectors from the cash drawer.
4. Plug the register DC power supply into a grounded outlet, connect the cord to the right-hand-side of the register, insert a control key and turn the control key to accessible location(s) with the key.

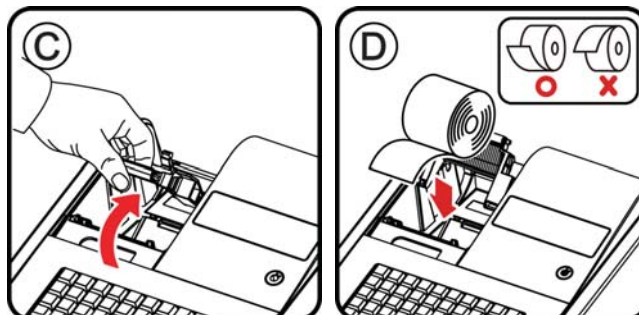
*An optional “paper takeup spindle + motor” kit is available if journal mode is required.

Installing the Paper

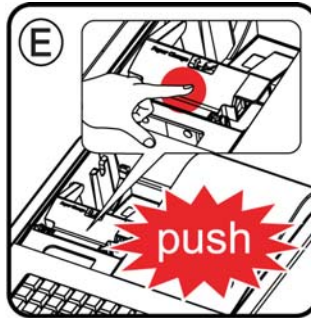
1. Remove the printer cover (A) and (B).



2. Open the housing clam cover and Insert the paper roll as shown (C) and (D)

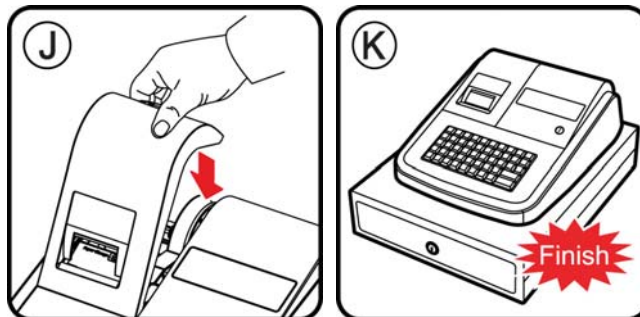


3. Pressing the housing clam cover (E).



FOR RECEIPT ONLY...

4. Pass the paper through the receipt window of the printer cover. Replace over printer compartment (J) and (K).



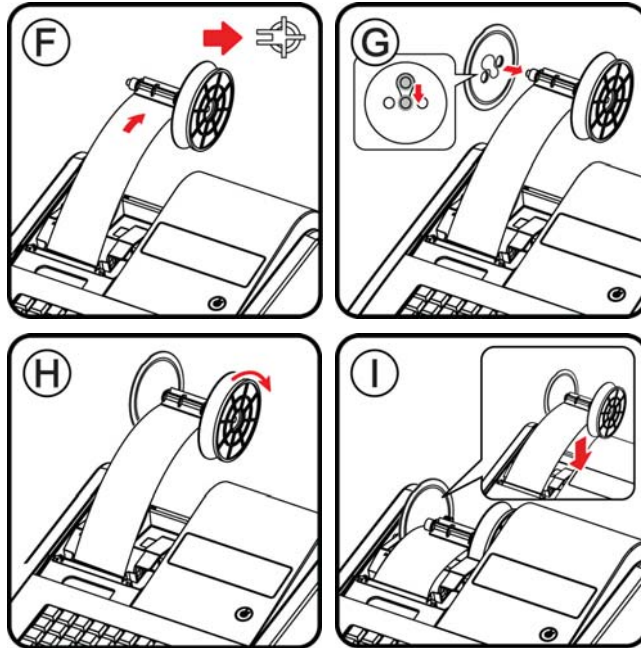
FOR JOURNAL ONLY...

Note: Paper take-up spool is optional.

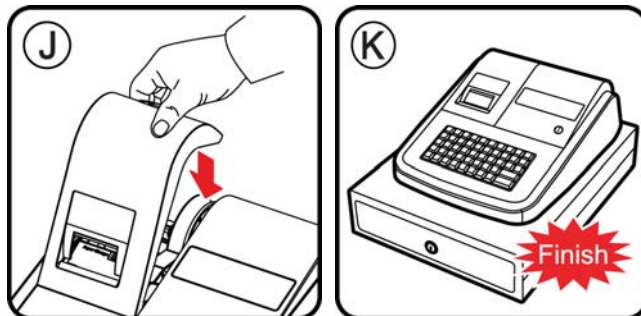
5. Press **FEED** key to advance paper (L).



6. Route paper over top of paper guide insert in the slot of the take-up spool (F) to (I)



7. Pass the paper through the receipt window of the printer cover. Replace over printer compartment (J) and (K).



Basic Features and Functions

Standard Hardware

- 8 position front and rear displays with a rear display standard.
- 48-position keyboard.
- 1 station thermal 24-column printer drop-and-print mechanism.
- Cash Drawer
 - *ER-180T*: Modern design cash drawer with 4 Bill/4 Coin drawer.
 - *ER-180TDL*: Traditional metal cash drawer with 4 Bill/8 Coin drawer.
- 7-position control lock.
- Standard customer display.

Optional Hardware

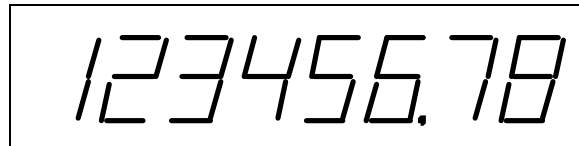
- Paper rewinder spindle set.

Software Features

- 16 Department Keys on the Keyboard
- 500 Price Look Ups (PLUs) for Open or Preset Item Registration
- 12-Character Programmable Descriptors for Departments and PLUs
- 8-Character Programmable Descriptors for Functions
- Cash, Check and Charge Payment Functions
- Currency Conversion
- Calculator Operation
- Operation for up to 10 clerks
- Tax Calculation by Percentage for up to Four Tax Rates
- Electronic Sales Journal (2,500 line capacity)

Display

The ER-180T comes with 8 digit florescent display on both front and rear.



Both displays offer supplemental descriptors, which appear in the first two display positions (as shown). These descriptors help the operator and customer by supplying additional information while operating the register, and may be accompanied by an error tone.

Supplemental descriptors include:

REG - Closed



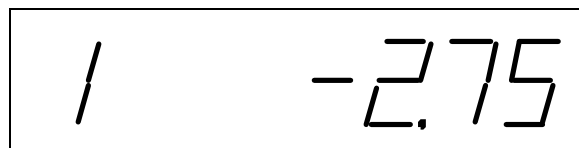
RPT



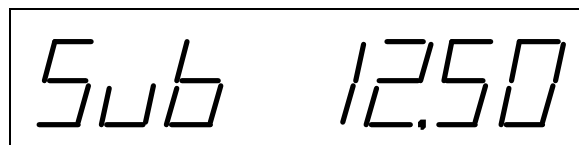
Change Due




Negative Entry



Subtotal



Total of Sale



A digital display showing a total sale of 1250. The number is displayed in a seven-segment font. To the left of the number, there are two horizontal lines, one above the other, indicating a negative value.

Numbered Error Conditions



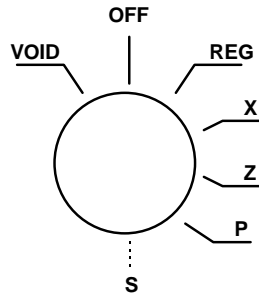
A digital display showing the error code E01. The characters are displayed in a seven-segment font.

Error Messages List

E0	SEQUENCE ERROR
E1	PLU NO DATA
E2	CLERK ERROR
E3	AMOUNT COUNT OVER
E4	TIME AND DATE
E5	LIMIT OVER
E6	REQ.DRAWER
E7	CONSOL OVER
E8	REQ.SUBTOTAL
E9	NO VOID PLU
E10	REQ.PRESET VALUE
E11	REQ.OPEN VALUE
E12	REQ. AMOUNT
E13	INVALID FUNCTION
E14	EJ FULL
E15	REQ.CASH DECLARATION
E16	REQ. Z REPORT
E17	INACTIVE
PER	RECEIPT PRINTER PAPER END

Control Lock

The control lock has 7 positions, accessed with 5 keys. Each ECR is shipped with two full sets of keys.



- VOID** Use to void (correct) items outside of a sale.
- OFF** The register is inoperable.
- REG** Use for normal registrations.
- X** Use to read register reports.
- Z** Use to read register reports and reset totals to zero.
- P** Use to program the register.
- S** **The S position is a hidden position reserved for dealer access.**

Before performing any operations in Register Mode a clerk must be signed on. See “**Clerk Sign-On/Sign-Off**” for a description of clerk operations.

Control Keys

The *ER-180T* includes two sets of keys that may be used to access the following control lock positions.

Key	Positions Accessible						
	VOID	OFF	REG	X	Z	PGM	S
Removable		√	√				
REG		√	√				
VD	√	√	√	√			
Z	√	√	√	√	√		
P	√	√	√	√	√	√	
C	√	√	√	√	√	√	√

Keyboards

ER-180T Standard Keyboard Layout

The *ER-180T* keyboard is shown below with the default legends and key assignments. This configuration has 16 keyboard Department locations.

FEED	CLEAR	PLU	X/TIME (X)	RCPT ON/OFF C/CONV	CLERK -	- %	+ %	NO SALE	CALC
RETURN	7	8	9	1	5	9	13	RA (+)	PO (-)
VOID	4	5	6	2	6	10	14	CHECK	CHARGE
CANCEL	1	2	3	3	7	11	15	SUB TOTAL	
TAX	0	00	.	4	8	12	16	CASH / TEND (=)	

ER-180T Alpha Keyboard Layout (EPROM v1.003 and later)

				A	F	K	P	U	X
DOUBLE	7	8	9	B	G	L	Q	V	Y
CAPS	4	5	6	C	H	M	R	W	Z
BACK	1	2	3	D	I	N	S	SUB TOTAL	
SPACE	0	00	.	E	J	O	T	CASH / TEND	

ER-180T Alpha Keyboard Layout (EPROM v1.002 and before)

DOUBLE	7	8	9	@ : /	ABC	DEF			
CAPS	4	5	6	GHI	JKL	MNO			
BACK	1	2	3	PORS	TUV	WXYZ		SUB TOTAL	
SPACE	0	00	.	*	., ? !	#		CASH / TEND	

Memory Clear

RAM All Clear

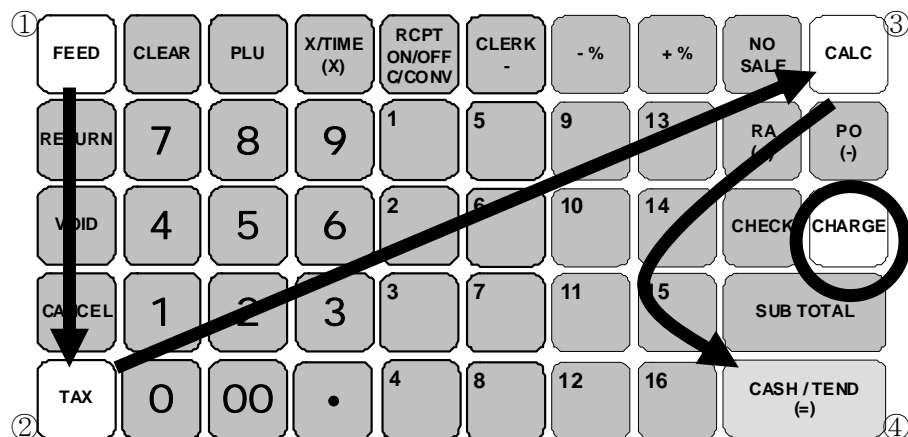
RAM clearing the cash register erases all programming and totals. Use this program the first time the cash register is programmed.

CAUTION: The procedures described in this area are security sensitive. Clearing all or parts of the memory may cause damage or loss to the program. Do not share this information with unauthorized users and distribute the special SERVICE-Mode key only to those you may want to perform these functions.

Perform "Clear All Totals" if you wish to clear only parts of memory. Complete clearing of all memory areas and installation of the default program can be done through the following special procedure:

To Perform a Memory All Clear (reset memory completely):

1. Unplug power adaptor from ECR.
2. Turn the control lock to the **S-Mode** (The **S** position is a hidden position one passed P-position).
3. Press and hold the key position where the **CHARGE** key (circled one) is located on the default keyboard layout.
4. Continue to hold the **CHARGE** key while plug the ECR into a power source.
5. After hear BEEP, release the **CHARGE** key.
6. Press the **upper left button** (FEED) of the keyboard, then the **lower left button** (TAX), then the **upper right button** (CALC), and finally press the **lower right button** (CASH/TEND).



7. Display will show "===== " while proceeding.
8. When memory is cleared, the register prints a message "RAM ALL CLEAR OK!", followed by the EPROM information.

Initial Clear

CAUTION: Do not share this information with unauthorized users. Distribute the C and P Mode key only to those you may want to perform this function.

The initial clear function allows you **to exit any register activity and return to a beginning or cleared state**. Any transaction that is in progress will be exited and totals for that transaction **will not be updated**. This procedure will **not** affect register programming, or clear previously stored totals in ECR memory

Here are some reasons you may want to perform an initial clear:

- The register is in an unknown state, and you wish to exit the current program or transaction without following normal procedures.
- You have performed a function that includes a compulsory activity and you wish to bypass the compulsion.
- An initial clear may be necessary as part of servicing, or troubleshooting..

To Perform an Initial Clear:

1. Unplug power adaptor from ECR.
2. Turn the control lock to the **PGM-Mode**.
3. Press and hold the key position where the **SUBTOTAL** key is located on the default keyboard layout.
4. While continuing to hold the **SUBTOTAL** key, plug the register into a power source.
5. The message "INITIAL CLEAR OK!" prints when the initial clear is complete. Operating Instructions

Operating Instructions

Function Key Descriptions

Keyboard Legend	Description
. (Decimal)	Use the Decimal key to enter fractions of percentages. For example to enter a one third off discount, enter 33.33 before pressing the -% key.
-% , +%	Use the Percent keys to add a percentage surcharge or subtract a percentage from an item or the subtotal of the sale. You can enter the amount of the percentage before pressing the -% or +% keys, or you can program a preset percentage if you are consistently using the same percentage.
00, 0 – 9	Use the numeric keypad to enter amounts, other numeric values.
CALC	Press CALC when outside of a sale to use the ER-180T as a basic calculator.
CANCEL	Press to void (or erase) all items entered in any transaction.
CASH/TEND (=)	Press to total a transaction paid by cash. Also if the cash amount tendered is over the amount purchased, enter the amount of the tender, then press the CASH/TEND key. The drawer will open and the cash change will be computed. Also use at the <i>total</i> function in calculator mode.
CHARGE	Press to total a transaction paid by charge or credit card.
CHECK	Press to total a transaction paid by check. Also if the check amount is over the amount purchased, enter the amount of the check, then press the CHECK key. The drawer will open and the cash change will be computed.
CLEAR	Press to clear numeric errors made on keyboard prior to pressing the registration key. Also press to stop the error alarm when incorrect entries are made.
CLERK - (MINUS)	Outside of a sale, use to sign on or sign off a clerk. Inside of a sale use this key to enter a negative amount (such as a coupon or deposit) by entering a price, then pressing the - (MINUS) key.
Department Keys	There are 16 department keys on the keyboard to register different types of merchandise. Departments may be used to accept open priced entries, or may be programmed to register preset prices
FEED	Press to advance the printer paper.

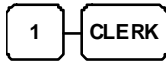
Keyboard Legend	Description
NO SALE	Press to open the cash drawer when you have not already started a transaction. No sale activity is logged on the financial report. Also, may be used to print any number (up to 8 digits) on the printer paper
PO (PAID OUT) (-)	Use to track cash paid out for merchandise or to record loans from the cash drawer. Also use as a <i>subtract</i> key in calculator mode (press first before entering an amount to subtract.)
PLU	Use to register a Price Look Up (PLU).
RCPT ON/OFF C/CONV	Outside of a sale, press to toggle the receipt from OFF to ON. Inside of a sale use the Currency Conversion key to convert the sale subtotal into an equivalent value in foreign currency. You must first program foreign currency exchange rates.
RA (RECD ACCT) (+)	Use to accept cash into the cash drawer when you are not actually selling merchandise. For example, use the Received on Account key to accept payments for previously sold merchandise or record loans to the cash drawer. Also use as the <i>add</i> key when in calculator mode.
RETURN	If you wish to return or refund an item, press Return Merchandise, then re-enter any item you wish to return.
SUB TOTAL	Press to see the subtotal of a sale.
TAX	Enter the tax number and press TAX to reverse the programmed tax status of a department or PLU key. For example, by using the TAX key prior to registering a taxable item, the item will be sold without sales tax added.
VOID	Press to void (or erase) the last item entered. You can also void an item previously entered within a transaction by pressing CLEAR, then VOID then re-entering the item you wish to correct.
X/TIME (x)	Enter a quantity and then press the X/TIME key to enter multiple items. Use to enter “split pricing” items, such as 1 item at 3 for \$.89. Also use to perform the multiplication function in calculator mode.

Clerk Sign-On/Sign-Off

To sign On/Off Clerk, need to turn key to **REG-Mode**.

Sign-On

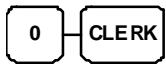
To sign on, enter the clerk number and press the **CLERK** key.



Clerk # (1 - 10)

Sign-Off

To sign the clerk off, Enter 0 (Zero) and press the **CLERK** key.



Receipt On and Off

On **ER-180T**, the receipt printer can be switched ON/OFF in REG Mode. All reports in X/Z Mode will still print even the receipt printer has been turned off. To switch receipt printer ON/OFF,



1. Press the **RECEIPT ON/OFF** key once to turn the receipt *off*.
2. Press the **RECEIPT ON/OFF** key again to turn the receipt *on*.

Calculator Function

You can use the ER-180T to perform simple addition, subtraction and multiplication calculator functions outside of a sale.

To perform a calculator operation, need to turn control lock to **REG-Mode**.

- Press the **CALC** key to enter calculator mode:

CALC

Addition

Enter amount, press **RA (+)** Enter amount, press **CASH/TEND (=)**

Subtraction

Enter amount, press **PO (-)** Enter amount, press **CASH/TEND (=)**

Multiplication

Enter amount, press **X/TIME (x)** Enter amount, press **CASH/TEND (=)**

- Press the **CLEAR** key to exit calculator mode:

CLEAR

Item(s) Registrations

All item(s) registration on *ER-180T* are made into preset and preset overridable Departments and PLUs.

- Departments Registrations can be made by pressing the Department key on the keyboard.
- PLU Registrations can be made by entering the PLU number then **PLU** function key.

This system simplifies reporting by listing all items (regardless of how they are entered) on the financial report.

To perform a item registration, need to turn control lock to **REG-Mode** if there is no specific instruction given.

Department Registrations

As you make registrations, you can follow your entries by viewing the display. The digit marked **RPT** counts items as they are repeated or multiplied.

In the following examples:

- Dept 1 is programmed for open entries, and is taxable by Tax 1.
- Dept 2 is programmed for open entries, and is taxable by Tax 2.
- Dept 3 is programmed with a preset price of \$3.00, and is taxable by Tax 3.
- Tax 1 is programmed at 5%; Tax 2 is programmed at 10%, Tax 3 is programmed at 15%.

PLU (Price Look Up) Registrations

PLUs must be programmed before they may be operated. See “**PLU Status Programming**” to program open or preset PLUs.

Department Entry - Open Price / Preset Price Override

1. Enter an amount on the ten key pad. *Do not use the decimal key.*

For example, for \$2.99, enter:



2. Press a Department key.

For example, press DEPT1:



Receipt Example:

THANK-YOU	
COME AGAIN	
01/25/2010 MON	09:23
DEPT1 T1	\$2.99
ROUND	\$0.01
GST	\$0.27
TOTAL	\$3.00
CASH	\$3.00
CLERK 1	000011 000000

Department Entry - Preset Price

1. Press a preset Department key.

For example, press DEPT 5:



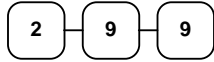
Receipt Example:

THANK-YOU	
COME AGAIN	
01/25/2010 MON	09:23
DEPT5 T1	\$2.99
ROUND	\$0.01
GST	\$0.27
TOTAL	\$3.00
CASH	\$3.00
CLERK 1	000012 000000

Department Entry - Repeat

1. Enter an amount on the ten key pad. *Do not use the decimal key.*

For example, for \$2.99, enter:



2. Press a Department key.

For example, press DEPT1:



3. To register a second item exactly as the first, press the Department key a second time.

For example, press DEPT1:



Receipt Example:

THANK-YOU	
COME AGAIN	
01/25/2010 MON	09:23
DEPT1 T1	\$2.99
DEPT1 T1	\$2.99
ROUND	\$0.02
GST	\$0.54
TOTAL	\$6.00
CASH	\$6.00
CLERK 1	000013 000000

Department Entry - Multiplication

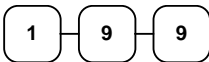
1. Enter the quantity of items being purchased, press the **X/TIME** key.

For example, enter **4** on the numeric key pad and press the **X/TIME** key:



2. Enter an amount on the ten key pad. *Do not use the decimal key.*

For example, for \$1.99, enter:



3. Press a Department key.

For example, press DEPT1:



Receipt Example:

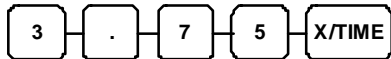
THANK-YOU	
COME AGAIN	
01/25/2010 MON	09:23
4X	1.99
DEPT1 T1	\$7.96
ROUND	-0.01
GST	\$0.72
TOTAL	\$7.95
CASH	\$7.95
CLERK 1	000014 000000

Department Entry - Multiplication with Decimal Point

If you are selling items by weight, or decimal quantities such as half-pints, you can multiply a fraction of a unit.

1. Enter the amount with the decimal point, press the **X/TIME** key.

For example, for 3.75 kilos of produce, enter:



2. Enter an amount on the ten key pad. *Do not use the decimal key.*

For example, if the price is \$.99 per kilo, enter:



3. Press a Department key.

For example, press DEPT 1:



Receipt Example:

THANK-YOU	
COME AGAIN	
01/25/2010 MON	09:23
3.75X	0.99
DEPT1 T1	\$3.71
ROUND	-0.01
GST	\$0.34
TOTAL	\$3.70
CASH	\$3.70
CLERK 1	000015 000000

Department Entry - Single Item

Single item departments automatically total as a cash sale immediately after registration. Use single item departments for speedy one item sales. For example if you are selling admission tickets, and all ticket sales are one item sales, you can assign open or preset department single item department for ticket sales. After each registration, the drawer will immediately open, and a separate receipt is printed.

1. Press a single item preset Department key. (or enter a price and press a single item open department key.)

For example, press DEPT 6:



Receipt Example:

THANK-YOU	
COME AGAIN	
01/25/2010 MON	09:23
DEPT6 T1	\$2.99
ROUND	\$0.01
GST	\$0.27
TOTAL	\$3.00
CASH	\$3.00
CLERK 1	000016 000000

Department Entry - Split Pricing

When items are priced in groups, i.e. 3 for \$1.00, you can enter the quantity purchased and let the register calculate the correct price.

1. Enter the quantity purchased, press the **X/TIME** key.

For example, enter:

2 **X/TIME**

2. Enter the quantity of the group price, press the **X/TIME** key.

For example, if the items are priced 3 for \$1.00, enter:

3 **X/TIME**

3. Enter an amount on the ten key pad.

For example, if the items are priced 3 for \$1.00, enter:

1 **0** **0**

4. Press a Department key.

For example, press **DEPT 1**:

DEPT1

Receipt Example:

THANK-YOU	
COME AGAIN	
01/25/2010 MON	09:23
2@3FOR	1.00
DEPT1 T1	\$0.67
ROUND	-0.02
GST	\$0.06
TOTAL	\$0.65
CASH	\$0.65
CLERK 1	000017 000000

PLU Entry - Open Price / Preset Price Override

If the PRESET status of a PLU is set to N (no), the PLU will operate as an **open PLU**. See "**PLU Programming**" in the "**Program Mode Programming**" chapter to program PLU descriptors and options.

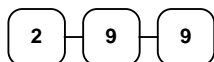
1. Enter the PLU number; press the **PLU** key.

For example, enter:



2. Enter an amount on the ten key pad. *Do not use the decimal key.*

For example, for \$2.99, enter:



3. Press the **PLU** key again.



Receipt Example:

THANK-YOU	
COME AGAIN	
01/25/2010 MON	09:23
PLU2 T1	\$2.99
ROUND	\$0.01
GST	\$0.27
TOTAL	\$3.00
CASH	\$3.00
CLERK 1	000018 000000

PLU Entry - Preset Price

1. Enter the PLU number; press the PLU key.

For example, enter:



Receipt Example:

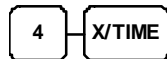
THANK-YOU	
COME AGAIN	
01/25/2010 MON	09:23
PLU1 T1	\$2.99
ROUND	\$0.01
GST	\$0.06
TOTAL	\$0.65
CASH	\$0.65
CLERK 1	000019 000000

PLU Entry - Multiplication

When several of the same items are to be entered into the same PLU, you can use multiplication. You can enter a quantity (1 to 999.999) using the **X/TIME** key. You can multiply open or preset PLUs.

1. Enter the quantity of items being purchased, press the **X/TIME** key.

For example, enter **4** on the numeric key pad and press the **X/TIME** key:



2. Enter the PLU number; press the **PLU** key.

For example, enter:



Receipt Example:

THANK-YOU	
COME AGAIN	
01/25/2010 MON	09:23
4X	2.99
PLU1 T1	\$11.96
ROUND	-0.01
GST	\$1.09
TOTAL	\$11.95
CASH	\$11.95
CLERK 1	000020 000000

Shifting Tax - (Add On Tax Only)

You can shift the pre-programmed status of a department or PLU by entering the tax number (1-4) and pressing the **TAX** key before entering an item. Using this sequence you can make normally taxable items non-taxable; or make normally non-taxable items taxable.

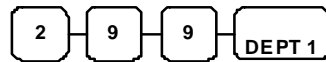
You can also exempt tax from an entire sale by first pressing the **SUBTOTAL** key, and then entering the tax number (1-4) and pressing the **TAX** key before tendering the sale

1. Enter the tax number; press the **TAX** key.

For example, enter:



2. Enter the item. In this example department #1 is normally taxable:



3. The normal tax status is shifted.

Receipt Example:

THANK-YOU	
COME AGAIN	
01/25/2010 MON	09:23
DEPT1	\$2.99
ROUND	\$0.01
TOTAL	\$2.00
CASH	\$2.00
CLERK 1	000021 000000

Percent Key (+% and -%) Operations

Use the Percent keys to add a percentage surcharge or subtract a percentage from an item or the subtotal of a sale. You can enter the amount of the percentage before pressing the -% or +% keys, or you can program a preset percentage if you are consistently using the same percentage. Programming determines whether it is possible to enter a percentage when the key is also programmed with a preset percentage. See “**Function Key Programming - - / -% / +% Key**” to set a preset percentage.

Preset Percent on a Department or PLU Item

In this example the -% key is preset with a rate of %10.00.

1. Register the discounted item.
2. Press the -% key:



The discount is automatically subtracted.

Receipt Example:

THANK-YOU	
COME AGAIN	
01/25/2010 MON	09:23
DEPT1 T1	\$2.99
-%	-10.000%
AMOUNT T1	-0.30
ROUND	\$0.01
GST	\$0.24
TOTAL	\$2.70
CASH	\$2.70
CLERK 1	000022 000000

Enter a Percent on a Department or PLU

You can also operate the -% or +% keys by entering the percentage of the discount or surcharge. If necessary, you can enter the percentage with a decimal key (up two 3 digits, i.e. 99.999%).

1. Register the discounted item.
2. Enter the percentage. If you are entering a fraction of a percent, **you must use the decimal key.**

For example, for 1/3 off enter:



3. Press the -% key:



4. The discount is automatically subtracted.

Receipt Example:

THANK-YOU	
COME AGAIN	
01/25/2010 MON	09:23
DEPT1 T1	\$10.00
-%	-33.333%
AMOUNT T1	-3.33
ROUND	-0.02
GST	\$0.61
TOTAL	\$6.65
CASH	\$6.65
CLERK 1	000023 000000

Percent On Sale Total

In this example a surcharge of 15% is applied.

1. Register the items you wish to sell.

2. Press **SUBTOTAL**:

**SUB
TOTAL**

3. Enter the percentage.

For example, for 15% enter:

1 **5**

4. Press the +% key:

-%

5. The surcharge is automatically added.

Receipt Example:

THANK-YOU	
COME AGAIN	
01/25/2010 MON	09:23
DEPT1 T1	\$10.00
+%	-15.000%
AMOUNT T1	\$1.50
GST	\$1.05
TOTAL	\$11.50
CASH	\$11.50
CLERK 1	000024 000000

- (Minus) Key Registrations

You can register a negative amount by entering a price, then pressing the - (Minus) key. For example, you can enter bottle returns or coupons using the - (Minus) key.

1. Register the items you wish to sell.

2. Enter the amount you wish to subtract from the sale.

For example for a \$.50 coupon, enter:

5 **0**

3. Press the **CLERK/ - (Minus)** key.

**CLERK
-**

Receipt Example:

THANK-YOU	
COME AGAIN	
01/25/2010 MON	09:23
DEPT1 T1	\$10.00
-	-0.50
GST	\$0.91
TOTAL	\$9.50
CASH	\$9.50
CLERK 1	000025 000000

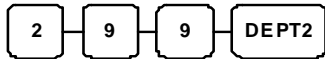
Return Merchandise Registrations

If you wish to return or refund an item press **RETURN**, then re-enter any item. You can return merchandise as part of a sale, or you can return merchandise as a separate transaction and return cash to the customer.

1. Press **RETURN**:



2. Enter the price of the item you wish to return, and then press the PLU key where it was registered originally.



3. Total the sale with **CASH**, **CHECK**, or a **CHARGE** function.

Receipt Example:

THANK-YOU	
COME AGAIN	
01/25/2010 MON	09:23
RETURN *****	
DEPT2 T1	-2.99
ROUND	-0.01
GST	-0.27
TOTAL	-3.00
CASH	-3.00
CLERK 1	000026 000000

Voids and Corrections

Void Last Item

This function corrects the last item entered.

1. Register an item. Then register a second item.
2. Press the **VOID** key.



Receipt Example:

THANK-YOU	
COME AGAIN	
01/25/2010 MON	09:23
DEPT1 T1	\$1.99
DEPT2 T1	\$2.99
ERRCORR -----	
DEPT2 T1	-2.99
ROUND	\$0.01
GST	\$0.18
TOTAL	\$2.00
CASH	\$2.00
CLERK 1	000027 000000

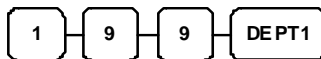
Void Previous Item

This function allows you to correct an item registered previously in a transaction.

1. Register an item. Then register a second item.
2. To correct the first item, press **CLEAR**, then press **VOID**:



3. Enter the price of the first item, and then press the DEPT2 key where it was registered originally.



Receipt Example:

THANK-YOU	
COME AGAIN	
01/25/2010 MON	09:23
DEPT1 T1	\$1.99
DEPT2 T1	\$2.99
VOID -----	
DEPT1 T1	-1.99
ROUND	\$0.01
GST	\$0.27
TOTAL	\$3.00
CASH	\$3.00
CLERK 1	000028 000000

Cancel

The **CANCEL** key allows you to stop any transaction. Anything registered within the transaction before the **CANCEL** key is pressed is automatically corrected. The **CANCEL** key can be inactivated through programming, see "**Function Key Programming**" in the "**Program Mode Programming**" chapter.

1. Register the items you wish to sell.
2. Press the **CANCEL** key

CANCEL

Receipt Example:

THANK-YOU		
COME AGAIN		
01/25/2010 MON		09:23
DEPT1 T1		\$1.99
CANCEL	*****	
TOTAL		\$0.00
CLERK 1	000029	000000

Void Position Operations

You can use the **VOID** control lock position to correct any complete transaction. To correct any transaction:

1. Turn the control lock to the **VOID-Mode**.
2. Enter the transaction you wish to correct exactly as it was entered originally in the **REG** control lock position. You can enter discounts, voids, returns, tax exemptions or any other function.
3. All totals and counters are corrected as if the original transaction did not take place.

Receipt Example:

THANK-YOU		
COME AGAIN		
01/25/2010 MON		09:23
VOID MODE	*****	
DEPT2 T1		-2.99
ROUND		-0.01
GST		-0.27
TOTAL		-3.00
CASH		-3.00
CLERK 1	000030	000000

No Sale Operations

Open Drawer

The **#/NS** key will open the cash drawer when you have not already started a transaction.

1. Press **#/NS**:



2. The drawer will open and the receipt will print as in the example on the right.

Receipt Example:

THANK-YOU		
COME AGAIN		
01/25/2010 MON	09:23	
NOSALE -----		
CLERK 1	000031	000000

Non Add Number

You can also use the **#/NS** key to print any number (up to 8 digits) on the printer paper. You can enter the number any time during a transaction. For example, if you wish to record a charge account number, enter the number and press the **#/NS** key before totaling the sale with the **CHARGE** key.

1. Register the items you wish to sell.
2. Enter the number you wish to record, for example enter:



3. Press **#/NS**:



4. Press **CHARGE**:



5. The display will indicate "=" for total, the drawer will open and the receipt will print as in the example on the right.

Receipt Example:

THANK-YOU		
COME AGAIN		
01/25/2010 MON	09:23	
DEPT1 T1	\$1.99	
NONADD #	1234	
ROUND	\$0.01	
GST	\$0.18	
TOTAL	\$2.00	
CASH	\$2.00	
CLERK 1	000032	000000

Received On Account Operations

You can use one of the received on account functions **RA** to accept cash or checks into the cash drawer when you are not actually selling merchandise. For example, use received on account to accept payments for previously sold merchandise, or record loans to the cash drawer.

1. Press the received on account keys

RA

2. Enter the amount of cash received, press **CASH**.

1 0 0 0 CASH

3. Enter the check amount received, and press **CHECK**.

1 0 0 0 CHECK

4. Enter the charge amount received, press **CHARGE**

1 0 0 0 CHARGE

5. You can continue to itemize receipts, or you can finalize by pressing or selecting the same received on account key.

RA

Receipt Example:

THANK-YOU		
COME AGAIN		
01/25/2010 MON	09:23	
RA		
CASH		\$10.00
CHECK		\$10.00
CHARGE		\$10.00
RA		\$30.00
CLERK 1	000033	000000

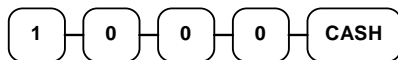
Paid Out Operations

You can use the paid out function **PO** to track cash or checks paid out or to record loans from the cash drawer.

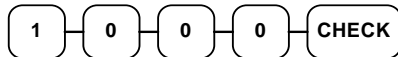
1. Press the paid out keys



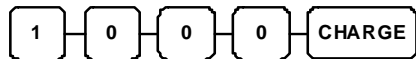
2. Enter the amount of cash received, press **CASH**.



3. Enter the check amount received, and press **CHECK**.



4. Enter the charge amount received, press **CHARGE**



5. You can continue to itemize paid outs, or you can finalize by pressing or selecting the same paid out key.



Receipt Example:

THANK-YOU		
COME AGAIN		
01/25/2010 MON		09:23
PO		
CASH		-10.00
CHECK		-10.00
CHARGE		-10.00
PO		-30.00
CLERK 1	000034	000000

Subtotaling a Sale

By pressing **SUB TOTAL** key anytime in a transaction, the current subtotal amount will be shown on the display. The subtotal can be printed on the receipt/electronic journal if the system option is set. See "**Print Option Programming**" in the "**Program Mode Programming**" chapter.


1. Register the items you wish to sell.
2. Press **SUBTOTAL**. The subtotal will display with the message "Sub" indicated on the rear display.



Totaling and Tendering

There are ten tender functions available to categorize sales. **CASH** and **CHECK** are individual keys on the keyboard.


Totaling a Cash Sale

1. Register the items you wish to sell.
2. To total a cash sale, press **CASH**:

3. The display will indicate the total amount of the cash sale.

Receipt Example:

THANK-YOU	
COME AGAIN	
01/25/2010 MON	09:23
DEPT1 T1	\$2.99
4X	1.99
DEPT2 T1	\$7.96
DEPT3 T1	\$3.99
ROUND	\$0.01
GST	\$1.36
TOTAL	\$14.95
CASH	\$14.95
CLERK 1	000035 000000

Totaling a Check Sale

1. Register the items you wish to sell.
2. To total a check sale, press **CHECK**:

3. The display will indicate the total amount of the check sale.

Receipt Example:


THANK-YOU	
COME AGAIN	
01/25/2010 MON	09:23
DEPT1 T1	\$2.99
4X	1.99
DEPT2 T1	\$7.96
DEPT3 T1	\$3.99
ROUND	\$0.01
GST	\$1.36
TOTAL	\$14.95
CHECK	\$14.95
CLERK 1	000036 000000

Tendering a Cash Sale

1. Register the items you wish to sell.
2. Enter the amount tendered by the customer.

For example, for \$20.00 enter:



3. Press **CASH**:

4. The display will indicate the total amount of the cash tendered and the change due, if any.

Receipt Example:


THANK-YOU	
COME AGAIN	
01/25/2010 MON	09:23
DEPT1 T1	\$2.99
4X	1.99
DEPT2 T1	\$7.96
DEPT3 T1	\$3.99
ROUND	\$0.01
GST	\$1.36
TOTAL	\$14.95
CASH	\$20.00
CHANGE	\$5.05
CLERK 1	000037 000000

Tendering a Check Sale

1. Register the items you wish to sell.
2. Enter the amount tendered by the customer.

For example, for \$20.00 enter:



3. Press **CHECK**:

4. The display will indicate the total amount of the check tendered and the change due, if any.

Receipt Example:

THANK-YOU	
COME AGAIN	
01/25/2010 MON	09:23
DEPT1 T1	\$2.99
4X	1.99
DEPT2 T1	\$7.96
DEPT3 T1	\$3.99
ROUND	\$0.01
GST	\$1.36
TOTAL	\$14.95
CHECK	\$20.00
CHANGE	\$5.05
CLERK 1	000038 000000

Totaling a Charge Sale

Use the charge keys to track charge or credit card sales. See "**Function Key Programming**" in the "**Program Mode Programming**" chapter to change the descriptors for the charge tender functions. For example, you can use CHARGE to track Visa card sales. The descriptor "VISA" will display on the function look up menu and print on the printer. You can also set tendering options for the charge keys, i.e. whether to allow over tendering or to enforce tendering.

1. Register the items you wish to sell.
2. Press one of the charge key if it is located on the keyboard:

CHARGE

Receipt Example:

```
THANK-YOU
COME AGAIN
01/25/2010 MON    09:23

DEPT1 T1          $2.99
4X                1.99
DEPT2 T1          $7.96
DEPT3 T1          $3.99
ROUND             $0.01
GST               $1.36
TOTAL $14.95
CHARGE
                $14.95
CLERK 1 000039 00000
```

Tendering a Charge Sale

Tendering a charge sale may or may not be allowed. See "**Function Key Programming**" in the "**Program Mode Programming**" chapter to set tendering options for the charge key, i.e. whether to allow over tendering or to enforce tendering.

1. Register the items you wish to sell.
2. Enter the amount of the charge and press one of the charge keys if it is located on the keyboard:

2 0 0 0 CHARGE

Receipt Example:

```
THANK-YOU
COME AGAIN
01/25/2010 MON    09:23

DEPT1 T1          $2.99
4X                1.99
DEPT2 T1          $7.96
DEPT3 T1          $3.99
ROUND             $0.01
GST               $1.36
TOTAL $14.95
CHARGE
                $20.00
CHANGE $5.05
CLERK 1 000040 00000
```

Split Tender

Split tendering is paying for one transaction by more than one payment method. For example, a \$20.00 sale could be split so \$10.00 is paid in cash, and the remaining \$10.00 is paid by a check. If necessary, you can make several different payments.

1. Register the items you wish to sell.
2. Enter the amount of cash tendered by the customer. For example, enter \$10.00 and press **CASH**:

1 0 0 0 CASH

3. The display will indicate the \$10.00 cash tender and the \$10.00 total still due.
4. Enter the amount of check tendered by the customer. For example, enter \$10.00 and press **CHECK**:

1 0 0 0 CHECK

5. When the total tendered equals or exceeds the total due, the receipt will print and the transaction is complete.

Receipt Example:

THANK-YOU	
COME AGAIN	
01/25/2010 MON	09:23
DEPT1 T1	\$2.99
4X	1.99
DEPT2 T1	\$7.96
DEPT3 T1	\$3.99
ROUND	\$0.01
GST	\$1.36
TOTAL	\$14.95
CASH	\$10.00
TOTAL	\$4.95
CHECK	\$10.00
CHANGE	\$5.05
CLERK 1	000041 000000

Post Tender

Post tendering means computing change after the sale has been totaled and the drawer is open. This feature is useful when a customer changes the amount of the tender or when a "quick change artist" confuses a clerk. Normally, this function is not allowed. If you wish to allow post tendering, you must set the appropriate system option.

1. Register the items you wish to sell.
2. Press **CASH**:

CASH

3. The display will indicate the total of the cash sale.
4. Enter the amount of the new tender, Press **CASH**:

2 0 0 0 CASH

5. The display will indicate the change due. **Change \$5.05** in this example.

Receipt Example:

THANK-YOU	
COME AGAIN	
01/25/2010 MON	09:23
DEPT1 T1	\$2.99
4X	1.99
DEPT2 T1	\$7.96
DEPT3 T1	\$3.99
ROUND	\$0.01
GST	\$1.36
TOTAL	\$14.95
CASH	\$14.95
CLERK 1	000042 000000

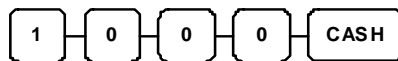
Currency Conversion

If you normally accept currency from neighboring nations, you can program to convert the subtotal of a sale to the equivalent cost in the foreign currency. You can set up four separate conversion functions for different foreign currencies. To do this, you need to program the conversion factor. For example, if the US dollar (home currency) is worth 1.3720 Canadian dollars (foreign currency), the conversion factor is 1.3720. See "**Function Key Programming**" in the "**Program Mode Programming**" chapter to set a conversion factor.

1. Register the items you wish to sell.
2. Press the **CONV1** key if it is located on the keyboard:



3. Enter the amount of the foreign currency tender, Press **CASH**:



4. The display will indicate the amount of foreign currency tendered and display \$5.29 change due. **The change due is computed in home currency!**

Receipt Example:

THANK-YOU	
COME AGAIN	
01/25/2010 MON	09:23
DEPT1 T1	\$2.00
GST	\$0.18
TOTAL	\$ 2 . 0 0
CONV	¥10.00
CHANGE RATE	@1.3720
HOME AMT	\$7.29
CHANGE	\$ 5 . 2 9
CLERK 1	000043 000000

The currency symbol you program will display here. See "Print Option Programming" in "Program Mode Programming" chapter.

X/Z Mode

Introduction

All Management Functions take place with the control lock in the **X** position. In this way only those with the correct key will have access to these functions. Some register operations may be programmed to require the control lock in the **X** position in order to operate. All reports require a key that will access the **X** or **Z** position.

X & Z Reports

System reports are divided into two basic categories:

- **X reports, which read totals without resetting**
- **Z reports, which read totals and reset them to zero**

Most reports are available in both categories. Some reports, such as the Cash-in-Drawer report and the From-To PLU report are available only as **X** reports.

Some reports also provide identical but separate *period to date* reports. These reports maintain a separate set of totals which may be allowed to accumulate over a period of days, weeks, months, or even years. **X2** reports read period to date totals without resetting, and **Z2** reports read period to date totals and reset them to zero. Period to date totals are updated each time a **Z1** report is completed.

A complete list of available reports is presented in a chart on the following page.

An example is given for each of these reports in the pages that follow. Those reports which may be optionally abbreviated through register programming are represented twice. They are first shown with the option off, giving all totals, and again with the option turned on, showing the abbreviated version of the same report.

Registers programmed with pop-up clerks must be signed on in the **REG** control lock position prior to taking reports.

Running a Report - General Instructions

1. Refer to the "Report Table".
2. Select a report type and the report mode.
3. Turn the control lock to the position indicated.
4. Enter the key sequence for the report you have selected.

Report Table

Report Type	Report Number	Report Mode	Control Lock Position	Key Sequence
Financial/Dept	1	X	X	1 - SUBTOTAL
		Z	Z	1 - SUBTOTAL
		X2	X	201 - SUBTOTAL
		Z2	Z	201 - SUBTOTAL
All PLU	2	X	X	2 - SUBTOTAL
		Z	Z	2 - SUBTOTAL
All Clerk	3	X	X	3 - SUBTOTAL
		Z	Z	3 - SUBTOTAL
Print All EJ	300	X	X	300 - SUBTOTAL
Reset EJ	399	Z	Z	399 - SUBTOTAL

Cash Declaration

If compulsory cash declaration is required, you must declare the count of the cash drawer prior to taking X or Z financial and clerk reports.

You can enter the cash drawer total in one step, or to facilitate the counting of the cash drawer, you can enter each type of bill/coin and checks separately and let the register act as an adding machine. You can also use the X/TIME key to multiply the denomination of currency times your count.

Either way you choose to enter cash, the register will compare your declaration with the expected cash and check in drawer totals and print the over or short amounts on the report.

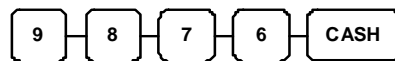
Program 90 - Cash Declaration Programming

For example:

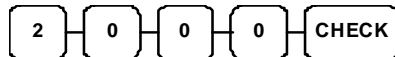
1. Turn the control lock to the **X-Mode**.
2. Enter **9 0** and press the **SUBTOTAL** key.



3. Enter the total of cash and press the **CASH** key.



4. Enter the total of checks and press the **CHECK** key.



5. Press the **CASH** key to total the declaration.



Receipt Example:

THANK-YOU	
COME AGAIN	
01/25/2010 MON	09:23
** CASH DECLARATION **	
CASH	\$98.76
CHECK	\$20.00
INPUT AMT	\$118.76
DRAWER TTL	\$118.76
DIFFERENCE	\$0.00
CLERK 1	000044 000000

Report Samples

Financial Report

Note: This sample report is shown with items of zero value listed on the report. Your report may only show totals with values other than zero, depending on the setting for print option #2.

Date, Day & Time ->
 Report Type/Reset (Z) Counter ->
 Report Name ->
 Department Name ->
 Department Sales Activity Counter & Total ->
 Department Counters and Totals are listed for each department)
 Count & Total of all Departments ->
 Total of non-taxable sales ->
 Taxable sales for each tax ->
 Tax collected for each tax ->
 Taxable sales exempted for each tax ->
 Count and total for amount discount ->
 (- key used as amount discount)
 Count and total for item discounts by percentage ->
 (-% key used as item % discount function)
 Count and total for sale discounts by percentage ->
 (-% key used as sale % discount function)
 Count and total for item surcharges by percentage ->
 (+% key used as item % surcharge function)
 Count and total for Sale surcharges ->
 (+% key used as sale % surcharge function)
 Customer Count ->
 Net Sales Amount ->
 Count of Return Merchandise items ->
 Total of Return Merchandise ->
 Count of Last Item Voids (Error Corrections) ->
 Total of Last Item Voids (Error Corrections) ->

Receipt Example:

THANK-YOU	
COME AGAIN	
02/17/2010 MON	09:23
Z 1 REPORT	00002

FINANCIAL	
DEPT1	
21	\$192.45
DEPT2	
5	\$3.10
DEPT16	
0	\$0.00
DEPT TTL	
26	\$195.55

NONTAX	\$0.00
TAX1 SALES	\$10.00
TAX2 SALES	\$0.00
TAX3 SALES	\$0.00
TAX4 SALES	\$0.00
TAX1	\$0.04
TAX2	\$0.00
TAX3	\$0.00
TAX4	\$0.00
XMPT1 SALES	\$0.00
XMPT2 SALES	\$0.00
XMPT3 SALES	\$0.00
XMPT4 SALES	\$0.00
-(MINUS)	0
	\$0.00
ITEM -% TTL	0
	\$0.00
SALE -% TTL	0
	\$0.00
ITEM +% TTL	0
	\$0.00
SALE +% TTL	0
	\$0.00
NET SALE	1
	\$10.50
RETURN	0
	\$0.00
ERROR CORR	0
	\$0.00

Continued on the next page ...

Count of Previous Item Voids ->
 Total of Previous Item Voids ->
 Number of VOID key position transactions ->
 Dollar amount of VOID key position ->
 # of canceled transactions ->
 Amount of canceled transactions ->
 Gross Sales ->
 # of Cash sales ->
 Dollar amount of Cash sales ->
 # of Check sales ->
 Dollar amount of Check sales ->
 # of Charge sales ->
 Dollar amount of Charge sales ->
 # of Rec'd on Account transactions ->
 Total of Rec'd on Accounts ->
 # of Paid Out transactions ->
 Total of Paid Out transactions ->
 Count of no sales ->
 # of Cash in Drawer ->
 Cash in drawer amount ->
 # of Checks in Drawer ->
 Check in drawer amount ->
 # of Charge Sales ->
 Total of Charges in Drawer ->
 Total of all Media in Drawer ->
 Foreign Currency Total ->
 Non-resettable Grand Total ->

Continued on the next page ...

PREVIOUS VD	0
	\$0.00
VOID MODE	0
	\$0.00
CANCEL	0
	\$0.00
GROSS SALES	\$10.50
CASH SALES	1
	\$10.50
CHECK SALES	0
	\$0.00
CHARGE SALES	0
	\$0.00
R/A	0
	\$0.00
P/O	0
	\$0.00
NO SALE	0
CASH-IN-D	0
	\$10.50
CHECK-IN-D	0
	\$0.00
CHARGE-IN-D	0
	\$0.00
DRWR TTL	0
FOREIGN	.0000

GRAND	\$221.40
CLERK 2 000045 000000	

PLU Report

Date, Day & Time ->
 Report Type/Reset (Z) Counter ->
 Report Name ->
 PLU Name ->
 PLU Sales Activity Counter & Total ->
 Count & Total of all PLUs ->

Receipt Example:

THANK-YOU	
COME AGAIN	
02/17/2010 MON	09:23
X 1 REPORT	00002

PLU	
DEPT22	
CNT 1	\$4.95
DEPT25	
CNT 5	\$8.85

TOTAL CNT	6
TOTAL AMT	\$13.80
CLERK 2 000045 000000	

Clerk Report

Receipt Example:

Date, Day & Time ->	02/17/2010 MON	09:23
Report Type/Reset (Z) Counter ->	X 1 REPORT	00002
Report Name ->	ALL CLERK	
Clerk Name ->	CLERK 1	
Clerk's Net Sales ->	NET SALE	\$207.40
Clerk's Gross Sales ->	GROSS SALES	\$210.90
Clerk's Drawer Total ->	DRWR TTL	\$209.40

	CLERK 2	
	NET SALE	\$71.85
	GROSS SALES	\$76.75
	DRWR TTL	\$71.85

	CLERK 3	

	CLERK 4	
	NET SALE	\$10.50
	GROSS SALES	\$10.50
	DRWR TTL	\$10.50

	CLERK 5	

	CLERK 6	

	CLERK 7	

	CLERK 8	

	CLERK 9	

	CLERK 10	

	CLERK 2	000046 000000

Balancing Formulas

Net Sales Total

+	Total of all Departments
+	TAX1 AMOUNT
+	TAX2 AMOUNT
+	TAX3 AMOUNT
+	+% (Sale Surcharge Total)
-	-% (Sale Discount Total)
-	- (Sale Minus Key Total)
=	NET SALE TTL

Gross Total

+	NET TTL
+	RETURN MDSE
+	VOID MODE
+	-% (Sale Discount Total)
+	- (Sale Minus Key Total)
=	GROSS SALES TTL

Grand Total

+	Yesterdays Grand Total
+	Gross Sales Total
=	GRAND TOTAL

Service Mode Programming

Overview

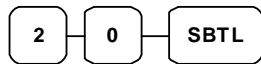
The following procedures are done from the Service Mode menu:

- *RAM All clear – see page 9*
- *Program 20 - Clear All Sales Totals*
- *Program 30 - Clear Grand Total*
- *Program 50 - EPROM Information*

Clear All Sales Totals

Program 20 - Clear All Sales Totals

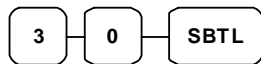
1. Turn the control lock to the **S-Mode**.
2. To Reset Total, enter 20, and then press the **SUBTOTAL** key.



Clear Grand Total

Program 30 - Clear Grand Total

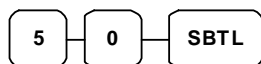
1. Turn the control lock to the **S-Mode**.
2. To Reset Grand Total, enter 30, and then press the **SUBTOTAL** key.



EPRM Information

Program 50 - EPRM Information

1. Turn the control lock to the **S-Mode**.
2. To Scan EPRM Information, enter 50, and then press the **SUBTOTAL** key.



Program Mode Programming

Default Programming

- All keyboard Departments are **Taxable, Preset** and **Override**, without entry limits by default status programming of "00000111".
- All keyboard PLUs are **Taxable, Preset** and **Override**, without entry limits by default status programming of "00000111".
- All system options are set to **0** in default programming, unless otherwise noted. Change only the options that will deviate from default programming. There is no need to re-enter an option status of **0**, since **0** is its original setting.
- All programming (unless otherwise noted) is done with the control lock in the **P** position. Each section details a specific area of register programming.
- The Default program is set to **10.000% VAT on Tax 1** and the description is set to **GST** already.

Descriptor Programming Methods

Descriptors are programmable for Departments, PLUs, function keys, groups, clerks and the logo/messages. There are two methods available to program descriptors, the *Program Overlay Method* and the *Descriptor Code Method*.

Program Overlay Method

Alpha Keyboard Layout (EPROM v1.003 and later)

				A	F	K	P	U	X
DOUBLE	7	8	9	B	G	L	Q	V	Y
CAPS	4	5	6	C	H	M	R	W	Z
BACK	1	2	3	D	I	N	S	SUB TOTAL	
SPACE	0	00	.	E	J	O	T	CASH / TEND	

Alpha Keyboard Layout (EPROM v1.002 and before)

DOUBLE	7	8	9	@/	ABC	DEF			
CAPS	4	5	6	GHI	JKL	MNO			
BACK	1	2	3	PORS	TUV	WXYZ		SUB TOTAL	
SPACE	0	00	.	*	.,?!	#		CASH / TEND	

Descriptor Code Method

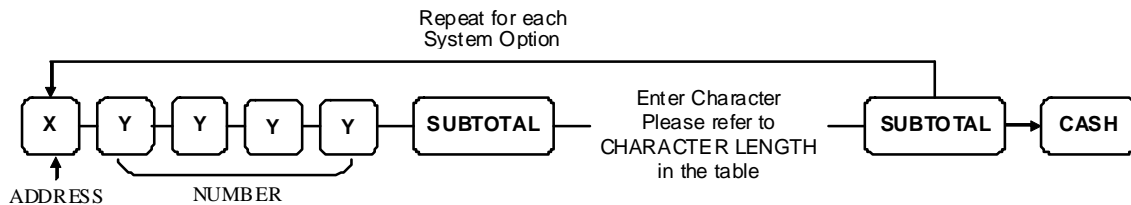
Descriptor Code Chart

CHAR	Ç	ü	é	â	ä	à	á	ç	ê	ë
CODE	001	002	003	004	005	006	007	008	009	010
CHAR	è	ï	î	ì	Ä	Å	É	æ	Æ	ô
CODE	011	012	013	014	015	016	017	018	019	020
CHAR	ö	ò	û	ù	ÿ	Ö	Ü	ø	£	¥
CODE	021	022	023	024	0250	026	027	028	029	030
CHAR	€	SPACE	!	"	#	\$	%	&	'	(
CODE	031	032	033	034	035	036	037	038	039	040
CHAR)	*	+	,	-	.	/	0	1	2
CODE	041	042	043	044	045	046	047	048	049	050
CHAR	3	4	5	6	7	8	9	:	;	<
CODE	051	052	053	054	055	056	057	058	059	060
CHAR	=	>	?	@	A	B	C	D	E	F
CODE	061	062	063	064	065	066	067	068	069	070
CHAR	G	H	I	J	K	L	M	N	O	P
CODE	071	072	073	074	075	076	077	078	079	080
CHAR	Q	R	S	T	U	V	W	X	Y	Z
CODE	081	082	083	084	085	086	087	088	089	090
CHAR							a	b	c	d
CODE	091	092	093	094	095	096	097	098	099	100
CHAR	e	f	g	h	i	j	k	l	m	n
CODE	101	102	103	104	105	106	107	108	109	110
CHAR	o	p	q	r	s	t	u	v	w	x
CODE	111	112	113	114	115	116	117	118	119	120
CHAR	y	z	BACK SPACE			Double				
CODE	121	122	123			999				

Overlay Descriptor Programming Methods

Overlay Descriptors are programmable for each **DEPARTMENT, PLU, CLERK, DEPARTMENT SOME FUNCTION KEYS** and **RECEIPT MESSAGE** using the following programming procedure.

To program description with overlay method, need to turn the control lock to the **PGM-Mode**.



NOTE : Refer to “ALPHA KEYBOARD LAYOUT” for entering characters.

Descriptor Programming Table

STANDARD DESCRIPTOR	ADDRESS	NUMBER	CHARACTER LENGTH	REMARKS
	X	YYYY		
DEPARTMENT	1	0001 ~ 0016	12 CHAR	16 Departments
PLU	2	0001 ~ 0500	12 CHAR	500 PLUs
RCPT MSG	3	0001 ~ 0006	24 CHAR	PREAMBLE (6 Lines)
RCPT MSG	4	0001 ~ 0006	24 CHAR	POSTAMBLE (6 Lines)
CLERK	5	0001 ~ 0010	8 CHAR	10 Clerks
RETURN	6	0030	8 CHAR	
VOID	6	0031	8 CHAR	
CANCEL	6	0032	8 CHAR	
TAX	6	0033	8 CHAR	
CONV	6	0034	8 CHAR	
-	6	0035	8 CHAR	
-%	6	0036	8 CHAR	
+%	6	0037	8 CHAR	
X/TIME	6	0040	8 CHAR	
NOSALE	6	0041	8 CHAR	
RA (Receive Aaccount)	6	0043	8 CHAR	
PO (Paid Out)	6	0044	8 CHAR	
CHECK	6	0045	8 CHAR	
CHARGE	6	0046	8 CHAR	
SUBTOTAL	6	0047	8 CHAR	
CASH	6	0048	8 CHAR	
HOME CURRENCY	7	0001	5 CHAR	
FOREIGN CURRENCY	8	0001	5 CHAR	

Descriptor Programming Examples (EPROM v1.002 and earlier)

Example	Key Sequence
ABC	<p>The diagram for Example ABC shows two key sequences. The first sequence consists of two paths: one starting with DEPT5 followed by TAX, and another starting with DEPT5 followed by DEPT5 followed by TAX. A 'Wait for 2 seconds' is indicated between these two paths. The second sequence also consists of two paths: one starting with DEPT5 followed by DEPT5 followed by DEPT5, and another starting with TAX. A 'Wait for 2 seconds' is indicated between these two paths.</p>
aBG9	<p>The diagram for Example aBG9 shows two key sequences. The first sequence consists of two paths: one starting with VOID followed by DEPT5 followed by TAX, and another starting with VOID followed by DEPT5 followed by DEPT5. A 'Wait for 2 seconds' is indicated between these two paths. The second sequence consists of four steps: TAX followed by DEPT2 followed by TAX followed by 9 followed by TAX. 'Wait for 2 seconds' is indicated between each of these steps.</p>
abg9	<p>The diagram for Example abg9 shows two key sequences. The first sequence consists of two paths: one starting with VOID followed by DEPT5 followed by TAX, and another starting with DEPT5 followed by DEPT5. A 'Wait for 2 seconds' is indicated between these two paths. The second sequence consists of four steps: TAX followed by DEPT2 followed by TAX followed by 9 followed by TAX. 'Wait for 2 seconds' is indicated between each of these steps.</p>
AA	<p>The diagram for Example AA shows a key sequence consisting of two paths: one starting with DEPT5 followed by RETURN followed by DEPT5, and another starting with TAX. A 'Wait for 2 seconds' is indicated between these two paths.</p>

Tax Programming

The *Sam4S ER-180T Electronic Cash Registers* has the capability to support four separate taxes.

Taxes can be calculated as either a straight percentage rate of between 0.001% and 99.999%, or a 60 break point tax table. Each tax may be either an add-on tax (added to the cost of a taxable item), or a value added tax (VAT) that is included in the price of the item.

- The Default program is set to 10.000% VAT on Tax 1 and the description is set to GST already.
- If you are entering a tax rate (add-on or VAT), see "Straight Percentage Tax Rate Programming" to enter the percentage rate.

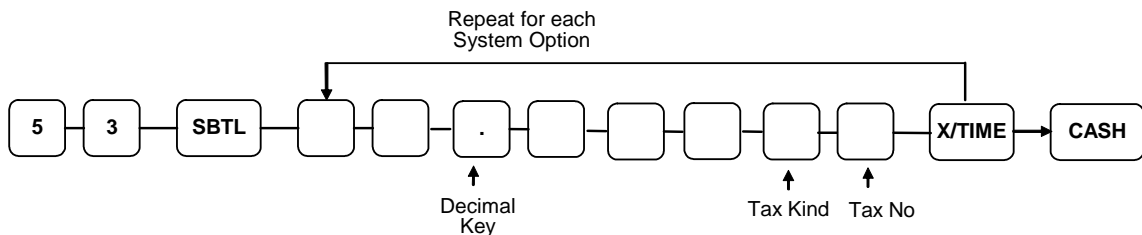
Important Note: After you have entered your tax program(s), test for accuracy by entering several transactions of different dollar amounts. Carefully check to make sure the tax charged by the cash register matches the tax on the printed tax chart for your area. As a merchant, you are responsible for accurate tax collection. If the cash register is not calculating tax accurately, contact your dealer for assistance.

Program 53 - Straight Percentage Tax Rate Programming

1. Turn the control lock to the **PGM-Mode**.
2. Press **5 3** and **SUBTOTAL** key.
3. If the tax is a percentage rate, with a decimal. (0.000-99.999). It is not necessary to enter preceding zeros. For example, for 6%, enter 06.000 or 6.000.
4. For the type of tax:

If the tax is a percentage added to the sale (normal add on tax), enter:	0
If the tax is a percentage value added tax (VAT; calculated as part of the sale), enter:	2

5. Enter Tax No for the tax is programming.
6. Press **CASH** key to finalise the program.



EX.) AU standard Tax 1: Vat on 10.000%

5 3 + SUBTOTAL + 1 0 + DECIMAL + 0 0 0 0 2 + X/TIME +CASH

Department Programming

Departments have various options can be set through separate programs:

- **Program 500 - Department Status Programming** determines whether the Department is open or preset. Also selected here are tax (1 ~ 4, **tax 1** is preset), negative, and single item options.
- **Program 520 - Department Price/HALO Programming** determines the Department price if the Department is preset, or the **high amount lock out (HALO)** if the Department is open price.
- **Program 530 - Department Descripor Programming** allows you to set a unique, up to 12-character descriptor for each Department with *Code Method*.

Program 500 - Department Status Programming

1. Turn the control lock to the **PGM-Mode**.
2. To begin the program, enter **5 0 0**, press the **SUBTOTAL** key.



3. Select the Department or Departments you wish to program in one of the following ways:

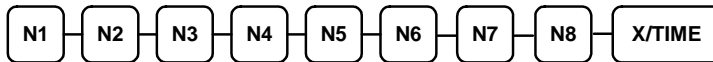
- Press a Department on the keyboard, or



- Press the first Department in a range of Departments that are to receive the same setting then press the last Department.



4. Refer to the "Department Status Chart" to determine the values for **N1** through **N8**. Enter the values you have selected, press the **X/TIME** key. (**You do not need to enter preceding zeros.**)



5. To program additional Departments, repeat from step 3, or press the **CASH** key to finalize the program.



Department Status Chart

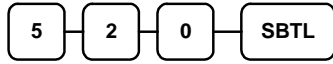
Address	Program Option	Value
N1	Department is negative item	Yes = 1 No = 0
N2	Department is single item	Yes = 1 No = 0
N3	Department is taxable by rate 4?	Yes = 1 No = 0
N4	Department is taxable by rate 3?	Yes = 1 No = 0
N5	Department is taxable by rate 2?	Yes = 1 No = 0
N6	Department is taxable by rate 1?	Yes = 1 No = 0
N7	Department is override preset?	Yes = 1 No = 0
N8	Department is preset?	Yes = 1 No = 0

AU default 0000111

Program 520 - Department Price/HALO Programming

If a DEPARTMENT is open, set the HALO (high amount lock out) here. If a DEPARTMENT is preset set the preset price here.

1. Turn the control lock to the **PGM-Mode**.
2. To begin the program, enter **5 2 0**, press the **SUBTOTAL** key.



3. Select the Department or Departments you wish to program in one of the following ways:

- Press a Department on the keyboard, or



- Press the first Department in a range of Departments that are to receive the same setting then press the last Department.



4. If the Department is open, enter a HALO of up to 7 digits. If the Department is preset, enter a preset price. (The maximum preset price you can enter is \$50,000.00.)



Price/HALO

5. To program additional Departments, repeat from step 3, or press the **CASH** key to finalize the program.



Program 530 - Department Descriptor Programming (Code Method)

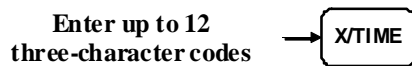
1. Turn the control lock to the **PGM-Mode**.
2. To begin the program, enter **5 3 0**, press the **SUBTOTAL** key.



3. Select the Department you wish to program:



4. Enter 12 three character codes, then press **X/TIME** key. Please refer to the descriptor code chart.



5. To program additional Department, repeat from step 3, or press the **CASH** key to finalize the program.



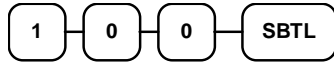
PLU Programming

PLUs have various options can be set through separate programs:

- **Program 100 - PLU Status Programming** determines whether the PLU is open or preset. Also selected here are tax (1 ~ 4, **tax 1** is preset), negative, and single item options.
- **Program 200 - PLU Price/HALO Programming** determines the PLU price if the PLU is preset, or the **high amount lock out (HALO)** if the PLU is open price.
- **Program 300 - PLU Descripor Programming** allows you to set a unique, up to 12-character descriptor for each PLU with **Code Method**.
- **Program 350 - PLU Link Programming** allows you to link a PLU to a DEPT for reporting.

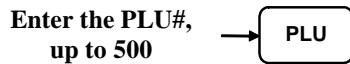
Program 100 - PLU Status Programming

1. Turn the control lock to the **PGM-Mode**.
2. To begin the program, enter **1 0 0**, press the **SUBTOTAL** key.

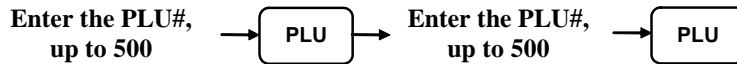


3. Select the PLU or PLUs you wish to program in one of the following ways:

- Enter up to 500 of the PLU and press the **PLU** key, or



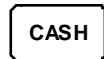
- Enter the number of the first PLU in a range of PLUs that are to receive the same setting; press the **PLU** key. Enter the last PLU number in the range; press the **PLU** key.



4. Refer to the "PLU" Status Chart" to determine the values for **N1** through **N8**. Enter the values you have selected, press the **X/TIME** key. (You do not need to enter preceding zeros.)



5. To program additional PLUs, repeat from step 3, or press the **CASH** key to finalize the program.



PLU Status Chart

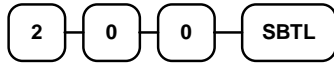
Address	Program Option	Value
N1	PLU is negative item?	Yes = 1 No = 0
N2	PLU is single item?	Yes = 1 No = 0
N3	PLU is taxable by rate 4?	Yes = 1 No = 0
N4	PLU is taxable by rate 3?	Yes = 1 No = 0
N5	PLU is taxable by rate 2?	Yes = 1 No = 0
N6	PLU is taxable by rate 1?	Yes = 1 No = 0
N7	PLU is override preset?	Yes = 1 No = 0
N8	PLU is preset?	Yes = 1 No = 0

AU default 00000111

Program 200 - PLU Price/HALO Programming

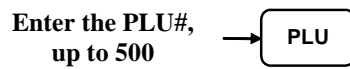
If a PLU is open, set the HALO (high amount lock out) here. If a PLU is preset set the preset price here.

1. Turn the control lock to the **PGM-Mode**.
2. To begin the program, enter **2 0 0**, press the **SUBTOTAL** key.

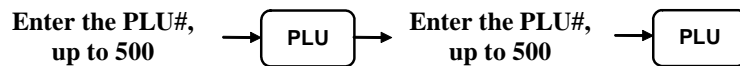


3. Select the PLU or PLUs you wish to program in one of the following ways:

- Enter up to 500 of the PLU and press the **PLU** key, or



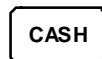
- Enter the number of the first PLU in a range of PLUs that are to receive the same setting; press the **PLU** key. Enter the last PLU number in the range; press the **PLU** key.



4. If the PLU is open, enter a HALO of up to 7 digits. If the PLU is preset, enter a preset price.

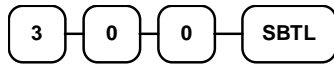


5. To program additional PLUs, repeat from step 3, or press the **CASH** key to finalize the program.

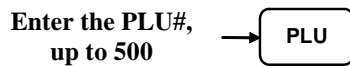


Program 300 - PLU Descriptor Programming (*Code Method*)

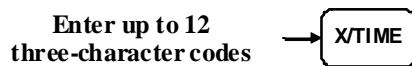
1. Turn the control lock to the **PGM-Mode**.
2. To begin the program, enter **3 0 0**, press the **SUBTOTAL** key.



3. Enter PLU number you wish to program and press the **PLU** key,



4. Enter 12 three character codes, then press **X/TIME** key. Please refer to the descriptor code chart.



5. To program additional PLUs, repeat from step 3, or press the **CASH** key to finalize the program.

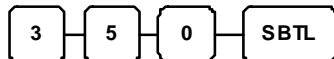


Program 350 - PLU Link Programming

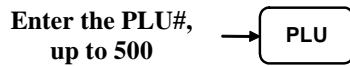
When a PLU is registered, the amount of the PLU is “linked” or reported to a department. The sale amount of the PLU will be reported in for the appropriate PLU in the PLU report and also in the department it is linked to.

Note: If a PLU is not linked to a Department, it’s sales will by default link to Department #1.

1. Turn the control lock to the **PGM-Mode**.
2. To begin the program, enter **3 5 0**, press the **SUBTOTAL** key.



3. Enter PLU number you wish to program and press the **PLU** key,



4. Press a **DEPARTMENT** key on the keyboard you wish the PLU linked to



5. To program additional PLUs, repeat from step 3, or press the **CASH** key to finalize the program.



System Option Programming

Refer to the “**System Option Table**” to review the system options. Read each option carefully to determine if you wish to make any changes.

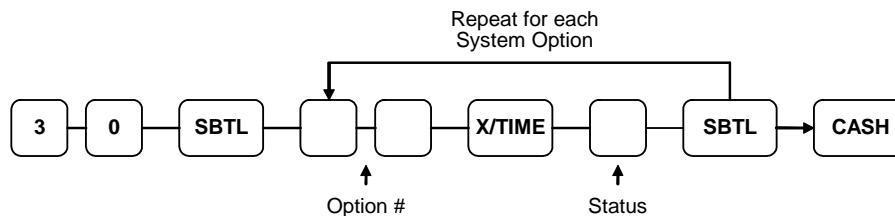
NOTE: Because after clearing memory all options settings are automatically set to 0, and because your most likely option selections require a status setting of 0, you do not need to program this section unless you wish to change the default status.

Program 30 - System Option Programming

Programming a System Option:

1. Turn the control lock to the **PGM-Mode**.
2. Enter **3 0**, press the **SUBTOTAL** key.
3. Enter a system option address, and then press the **X/TIME** key.
4. Enter the number representing the status you have selected, or if there is more than one decision to be made in an address, add the values representing your choices for each decision and enter the sum. Press the **SUBTOTAL** key.
5. Repeat from step 3 for each system option you wish to change.
6. Press the **CASH** key to end system option programming.

System Option Flowchart



System Option Table

Address	SYSTEM OPTION	VALUE
1	Beeper is active?	Yes = 1 No = 0
2	Date format is:	MMDDYY = 0
		DDMMYY = 1
		YYMMDD = 2
3	Decimal place: (0,1,2,3)	2
4	Cash drawer will open when reports are run?	Yes = 1 No = 0
5	Drawer needs to be shut to operate?	Yes = 1 No = 0
6	Use Spool?	Yes = 1 No = 0
7	Enable Electronic Journal?	Yes = 1 No = 0
8	Prompt operator when Electronic Journal is full	Yes = 1 No = 0
9	Electronic Journal is Oldest?	Yes = 1 No = 0
10	Allow Direct Multiply?	Yes = 1 No = 0
11	Allow multiple receipts?	Yes = 1 No = 0
12	Allow the post tender function?	Yes = 1 No = 0
13	Cash Declaration Required before Z Financial report?	Yes = 1 No = 0
14	Consecutive number is reset after a financial report?	Yes = 1 No = 0
15	Reset Grand Total after Z financial Report?	Yes = 1 No = 0
16	Reset the Financial report Z counter after a Z1 Financial report?	Yes = 1 No = 0
17	Reset the PLU report Z counter after a Z1 PLU report?	Yes = 1 No = 0
18	Reset the Clerk report Z counter after a Z1 Clerk report?	Yes = 1 No = 0
19	Triple multiplication	Yes = 1 No = 0

Address	SYSTEM OPTION		VALUE
20	Rounding option	Default	0
		AU/European Round .00 - .02 = .00 .03 - .07 = .05 .08 - .09 = .10	1
		Swedish Round .00 - .24 = .00 .25 - .74 = .50 .75 - .99 = 1.00	2
		Thai Round .00 - .49 = .00 .50 - .99 = 1.00	3
		Newzealand Round .00 - .04 = .00 .05 - .09 = .10	4
21	Training Clerk (0 ~ 10; 0 is No Training Clerk)		0

Print Option Programming

Refer to the “**Print Option Table**” to review the print options. Read each option carefully to determine if you wish to make any changes.

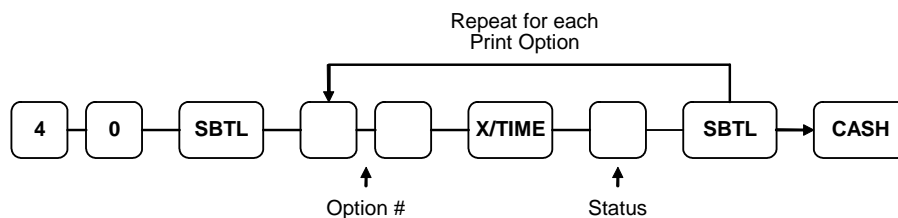
NOTE: Because after clearing memory all options settings are automatically set to 0, and because your most likely option selections require a status setting of 0, you do not need to program this section unless you wish to change the default status.

Program 40 - Print Option Programming

Programming a Print Option:

1. Turn the control lock to the **PGM-Mode**.
2. Enter **4 0**, press the **SUBTOTAL** key.
3. Enter a print option address, and then press the **X/TIME** key.
4. Enter the number representing the status you have selected, or if there is more than one decision to be made in an address, add the values representing your choices for each decision and enter the sum. Press the **SUBTOTAL** key.
5. Repeat from step 3 for each print option you wish to change.
6. Press the **CASH** key to end print option programming.

Print Option Flowchart



Print Option Table

Address	PRINT OPTION	VALUE
1	Print Z counter on reports?	Yes = 1 No = 0
2	Skip media totals with zero activity on the report?	Yes = 1 No = 0
3	Home Currency symbol (up to 5 character)	\$
4	Currency Symbol (up to 5 character)	•
5	Issue a second receipt for the same transaction?	Yes = 1 No = 0
6	Subtotal is printed when the SUBTOTAL key is pressed?	Yes = 1 No = 0
7	Print consecutive number counter on receipt?	Yes = 1 No = 0
8	Print date on receipt?	Yes = 1 No = 0
9	Print time on receipt?	Yes = 1 No = 0
10	Print clerk name on receipt?	Yes = 1 No = 0
11	Void mode/Return totals will print on the Financial report?	Yes = 1 No = 0
12	Print PLU/DEPT sale item number?	Yes = 1 No = 0
13	Print tax symbol?	Yes = 1 No = 0
14	Print the tax amount on receipt?	Yes = 1 No = 0
15	Print taxable totals?	Yes = 1 No = 0
16	Print the tax rate?	Yes = 1 No = 0
17	Print a breakdown of the VAT eligible sale?	Yes = 1 No = 0
18	Print Grand total on the Financial report?	Yes = 1 No = 0
19	Print Gross total on the Financial report?	Yes = 1 No = 0
20	Grand total is:	Net sale = 1
		Gross sale = 0
21	Print on NO SALE performed	Yes = 1 No = 0
22	Print preamble message on receipt?	Yes = 1 No = 0
23	Print postamble message on receipt?	Yes = 1 No = 0
24	Print report on Electronic Journal	Yes = 1 No = 0

Address	PRINT OPTION	VALUE
25	Print training mode message on the receipt during training mode operations?	Yes = 1 No = 0
26	Print the PLU/DEPT number on the receipt?	Yes = 1 No = 0
27	Print the PLU number on PLU report?	Yes = 1 No = 0

Function Key Programming

Three programs are used to program function keys:

- *Program 70* - is used to set each keys individual options
- *Program 80* - is used to program an 8 character alpha numeric descriptor
- *Program 90* - is used to set a high amount limit (HALO) & rates

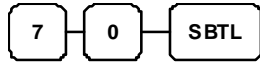
In this chapter you will find:

- General instructions for programs 70, 80 and 90.
- Specific programming instructions for each function key.

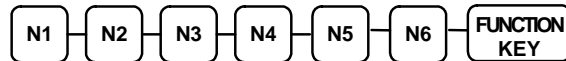
Program 70 - Function Key Options

Use Program 70 to set options for function keys. Because of the differences inherent in function keys, individual options will be different. See the specific instructions for each key in this chapter to find the options for each key.

1. Turn the control lock to the **PGM-Mode**.
2. To begin the program, enter **7 0**, press the **SUBTOTAL** key.



3. Enter the values for the option digit or digits. Depending on the function key you are programming, you may enter up to six digits **N1** through **N6**. Determine the values for **N1** through **N6** by referring to the specific function key information that follows. (**You do not need to enter preceding zeros**. For example, if the function key offers six digits, **N1** through **N6** and you are only selecting a value for **N6**, just enter the value for **N6**.) Press the function key you wish to program.

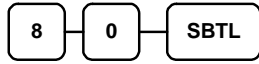


4. To program additional function keys, repeat from step 3, or press the **CASH** key to finalize the program.

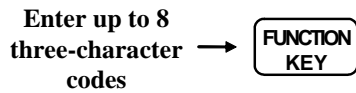


Program 80 - Function Key Descriptor (Code Method)

1. Turn the control lock to the **PGM-Mode**.
2. To begin the program, enter **8 0**, press the **SUBTOTAL** key.



3. Enter up to 8 three-character codes and press the **FUNCTION KEY**.



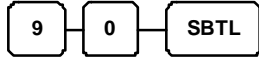
4. To program additional function keys, repeat from step 3, or press the **CASH** key to finalize the program.



Program 90 - Function Key HALO and Rates

Use Program 90 to program a high amount lock out (HALO) for a function key. Only specific keys require this program. For example, you can set a HALO for the **CASH**, **CHECK** or **CHARGE** keys. Refer to the specific function key programming information in this chapter to determine when the HALO option is available.

1. Turn the control lock to the **PGM-Mode**.
2. To begin the program, enter **9 0**, press the **SUBTOTAL** key.



3. Enter a HALO of up to eight digits, (or "0" for no HALO).

**Enter 1-8 digit
HALO**

4. Press the function key on the keyboard you wish to program.

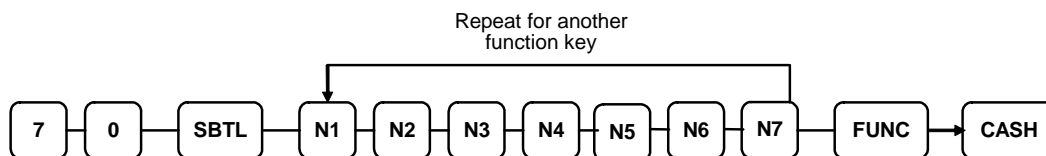


5. To program additional function keys, repeat from step 2, or press the **CASH** key to finalize the program.



CASH/CHECK/CHARGE

Options - Program 70



Address	OPTION	VALUE
N1	Amount tender is compulsory?	Yes = 1 No = 0
N2	Allow over/under tendering?	Yes = 1 No = 0
N3	Disable under tendering?	Yes = 1 No = 0
N4	Exempt tax 1?	Yes = 1 No = 0
N5	Exempt tax 2?	Yes = 1 No = 0
N6	Exempt tax 3?	Yes = 1 No = 0
N7	Exempt tax 4?	Yes = 1 No = 0

Descriptor

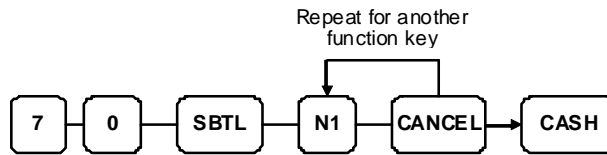
- Refer to "Program 80 - Function Key Descriptor (*Code Method*)"

HALO - Program 90

- Refer to "Program 90 - Function Key HALO"

CANCEL

Options - Program 70



Address	OPTION	VALUE
N1	Key is inactive?	Yes = 1 No = 0

Descriptor

- Refer to "Program 80 - Function Key Descriptor (*Code Method*)"

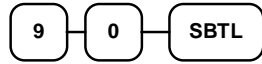
HALO - Program 90

- Refer to "Program 90 - Function Key HALO"

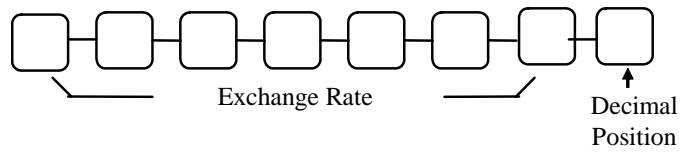
CURRENCY CONVERSION

Currency Conversion Rate - Program 90

1. Turn the control lock to the **PGM-Mode**.
2. To begin the program, enter **9 0**, press the **SUBTOTAL** key.



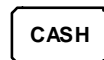
3. Enter the exchange rate of up to 7 digits (do not enter the decimal point), and then enter a number from 0 to 7 to indicate the decimal position. See "**Currency Exchange Rate Programming Examples**" below.



4. Press the function key on the keyboard you wish to program.



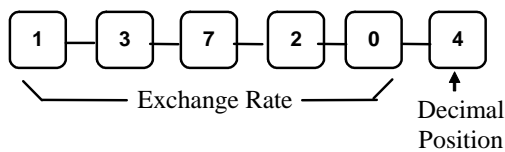
5. To program additional function keys, repeat from step 2, or press the **CASH** key to finalize the program.



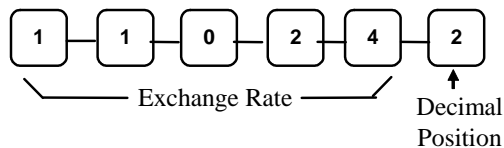
Currency Exchange Rate Programming Examples

Note: Foreign currency exchange rates may be stated as "foreign currency in dollars", or "dollars in foreign currency". Use the rate stated in "dollars in foreign currency" when you are programming this section.

The US dollar (home currency) is worth 1.3720 Canadian dollars (foreign currency).

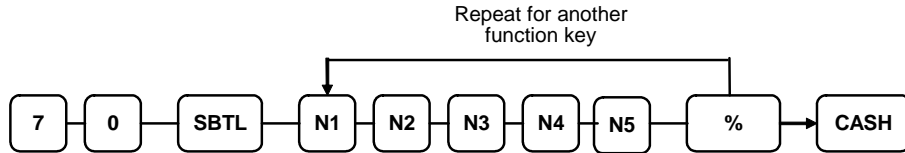


The US dollar (home currency) is worth 110.24 Japanese Yen (foreign currency).



- / -% / +%

Options - Program 70

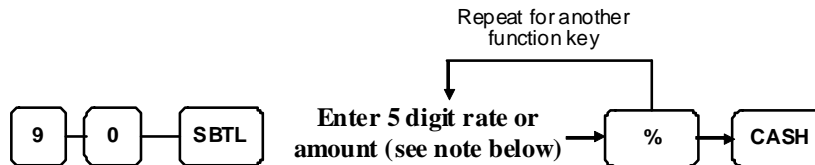


Address	OPTION	VALUE
N1	% Key is:	Open = 1
		Preset = 0
N2	% Amount taxable tax 1?	Yes = 1 No = 0
N3	% Amount taxable tax 2?	Yes = 1 No = 0
N4	% Amount taxable tax 3?	Yes = 1 No = 0
N5	% Amount taxable tax 4?	Yes = 1 No = 0

Descriptor

- Refer to "Program 80 – Function Key Descriptor (*Code Method*)"

% Rate - Program 90

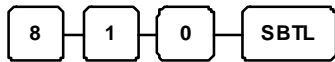


Note: If key is amount, enter 5 digit HALO, or 0 for no HALO. If key is percentage enter the percentage in a five-digit format, without the decimal (XX.XXX). For example: for 10%, enter 10000; for 5.55%, enter 05550; for 99.999%, enter 99999.

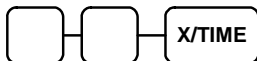
Miscellaneous Programming

Program 810 - Clerk Description Programming

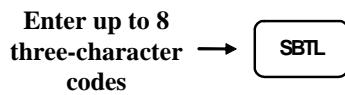
1. Turn the control lock to the **PGM-Mode**.
2. To begin the program, enter **8 1 0**, press the **SUBTOTAL** key.



3. Enter the number of the clerk you wish to program; press the **X/TIME** key.



4. Enter up to 8 three-character codes and press **SUBTOTAL** key.



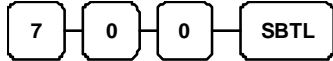
5. Press the **CASH** key to finalize the program.



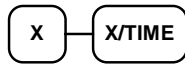
Program 700 - Preamble Logo Description Programming (*Code Method*)

A preamble message of up to six lines can be printed at the top of each receipt. Each line can consist of up to 24 characters.

1. Turn the control lock to the **PGM-Mode**.
2. To begin the program, enter **7 0 0**, press the **SUBTOTAL** key.

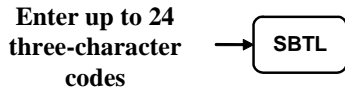


3. Refer to the chart below and enter the number that represents the line you wish to program; press the **X/TIME** key.



X	Message Line
1	1 st line of Preamble
2	2 nd line of Preamble
3	3 rd line of Preamble
4	4 th line of Preamble
5	5 th line of Preamble
6	6 th line of Preamble

4. Enter up to 8 three-character codes and press **SUBTOTAL** key.



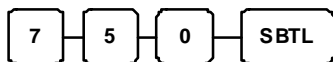
5. Press the **CASH** key to finalize the program.



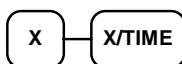
Program 750 - Postamble Logo Description Programming (Code Method)

A postamble message of up to six lines can be printed at the bottom of each receipt. Each line can consist of up to 24 characters.

1. Turn the control lock to the **PGM-Mode**.
2. To begin the program, enter **7 5 0**, press the **SUBTOTAL** key.

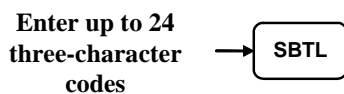


3. Refer to the chart below and enter the number that represents the line you wish to program; press the **X/TIME** key.

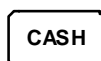


X	Message Line
1	1 st line of Postamble
2	2 nd line of Postamble
3	3 rd line of Postamble
4	4 th line of Postamble
5	5 th line of Postamble
6	6 th line of Postamble

4. Enter up to 8 three-character codes and press **SUBTOTAL** key.



5. Press the **CASH** key to finalize the program.

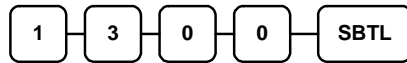


Program 1300 - Date and Time Programming

Use this program to set the clock and calendar on your *ER-180T*. The date changes automatically. After initial setting, time changing will probably be required only for beginning and ending daylight savings time.

Programming the Date and Time

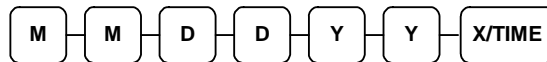
1. Turn the control lock to the **PGM-Mode**.
2. To begin the program, enter **1 3 0 0**, press the **SUBTOTAL** key.



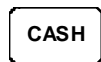
3. Enter time in military standard time (based on 24 hours), must be four digits (i.e. 1300 hours = 1:00 PM); press the **X/TIME** key.



4. Enter the date in MM (month) DD (day) and YY (year) format. Press the **X/TIME** key:



5. Press the **CASH** key to finalize the program.

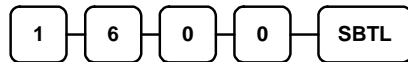


Program 1600 - Machine Number Programming

The machine number is printed on the register receipt. Program a machine number so that any receipt can be identified with the store or register where the transaction took place.

Programming the Machine Number

1. Turn the control lock to the **PGM-Mode**.
2. To begin the program, enter **1 6 0 0**, press the **SUBTOTAL** key.



3. Enter a machine number (up to 6 digits); press the **X/TIME** key.



4. Press the **CASH** key to finalize the program.

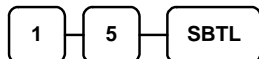


Program Scans

Since much time and energy has been invested in the planning and programming of your *ER-180T*, it is advisable to print a hard copy of the final program for future reference. This copy should be kept in a safe place.

Program 15 - Machine Number Programming

1. Turn the control lock to the **PGM-Mode**.
2. To print a program scan, enter **1 5**, press the **SUBTOTAL** key.



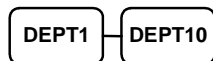
3. In this step, there are three different ways to scan program information. One is **Departments**, the other is **PLUs**, The third is **OTHERS**.

DEPARTMENT PROGRAM SCAN

- To read single Department program information, press the Department on the keyboard and press the same Department again.

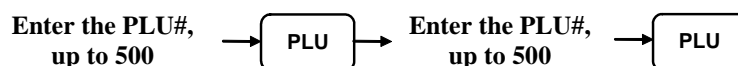


- To read multiple Departments program information, press the **first** Department in the keyboard and press the **last** Department again.

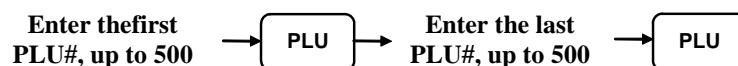


PLU PROGRAM SCAN

- To read single PLU program information, enter the number of the PLU then press **PLU** key, followed with same number and press **PLU** key.

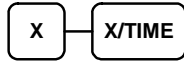


- To read mutiple PLUs program information, enter the number of the **first** PLU then press **PLU** key, followed with the number of **last** PLU and press **PLU** key.



OTHERS PROGRAM SCAN

Refer to the chart below and enter a digit to represent the segment of the program you wish to print; press the **X/TIME** key. To see additional scan, repeat this operation.



X	Program
1	Tax
2	System option
3	Print option
4	Function keys
5	Clerk
6	Preamble message/ Postamble message

4. Press the **CASH** key to finalize the program.

